



Series T/Z/X/A/B

Round-column Optional Equipment

Model	Description:
7044	Coolant System with separate tank (all models)
7022	Worklight with magnetic base (all models)
PST	Cycle or spindle turn START foot pedal
PSR	Spindle reverse foot pedal (for tapping)
MCC-KT	Cross Slide Table 13.8" x 10.8" (K/T Series)
MCC-ZX	Cross Slide Table 15" x 8.7" (Z/X Series)
MCC-X40	Cross Slide Table 15" x 8.7" (X40 Series)
MB-5D	Cross Slide Table 16" x 12" (X model 35/A/B Series)
SeriesT	<i>(Factory Installed only)</i>
MG-T	Rotating table
PKA	Floor Cabinet with 2 shelves
PKB	Floor Cabinet with door and drawer
SeriesZ	<i>(Factory Installed only)</i>
MG-Z	Rotating table
MGI-Z	Tilting Rotating Table
TAK-Z	Digital rpm read-out (V models only)
UC-Z	Union, dragging cone and assembly for multi-spindle head
SeriesX	<i>(Factory Installed only)</i>
MG-X	Rotating table (X-32 Models)
MGI-X	Tilting Rotating Table
RPF-X	Automatic pitch controlled tapping with single speed brake-motor
RPF-ANR-X	Automatic pitch controlled tapping with pneumatic rapid approach
HGP-X	Master guide spindle and nut set for automatic pitch controlled tapping
UC-X	Union, dragging cone and assembly for multi-spindle head
SeriesA/B	<i>(Factory Installed only)</i>
RPF-A	Automatic pitch controlled tapping with single speed brake-motor
RPF-ANR-A	Automatic pitch controlled tapping with pneumatic rapid approach
HGP-A	Master guide spindle and nut set for automatic pitch controlled tapping
ACNL-B	Pneumatic counterbalance with rapid approach and retreat
ACNL-S-B	Pneumatic counterbalance with rapid approach and retreat for tube and profile drilling
ACNL-RPF-B	Pneumatic counterbalance with rapid approach and retreat with controlled tapping
AR-A	50% lower feed rate range
DLM-A	Mechanical spotface device
CN-A	Pneumatic counterbalance for spindle return
UC-A	Union, dragging cone and assembly for multi-spindle head
GM-A	Multi-spindle head guide rod
PM-B	Start-stop and emergency stop pendent control
SC-B	8" column riser



PST
Cycle or spindle turn START foot pedal

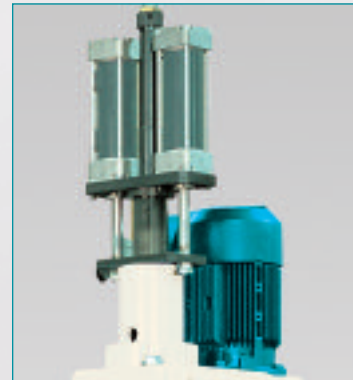
PSR
Spindle reverse foot pedal (for tapping)



RS
Automatic feed reversing system for tapping. (standard on series T/Z/X/A/B-RS models)



TAK
Digital rpm display. (for series Z-V models)



RPF-ANR
Automatic pitch controlled tapping with pneumatic rapid approach. (standard on series X/A/B models)



RPF
Automatic pitch controlled tapping with single speed brake-motor. (for series X/A/B models)



MGM rotating table with 3 T-slots on one side and a vise on the other for model Z34 & X34



MG
Rotating table with 3 T-slots. (for series Z/X-32 models standard on all other models)



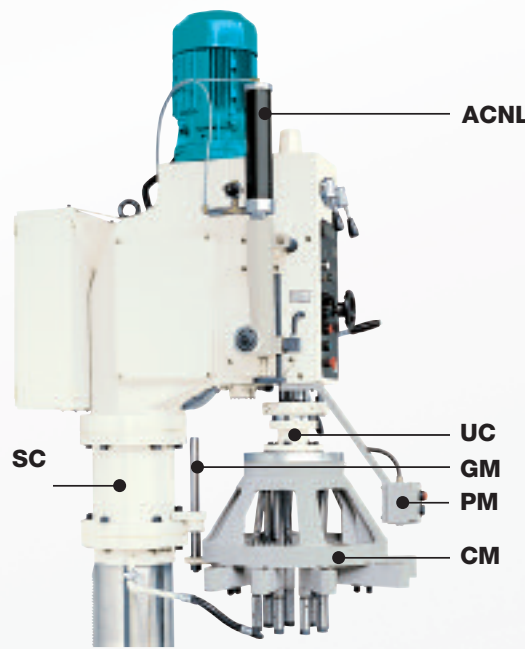
MGI
Rotating table with 3 T-slots and tilting support. (for series Z/X/A/B models)



ACNL
Pneumatic counterbalance for automatic drilling cycle with rapid approach, working feed and rapid retract. (for series **B** models)

ACNL-S
Pneumatic counterbalance for automatic drilling cycle with two rapid approaches, and rapid retract, for tube and profile drilling. (for series **B** models)

Assembly for Multi-Spindle Heads



ACNL Automatic drilling cycle with rapid approach, working feed and rapid retract, with additional pneumatic counterweight function for the multi-spindle head.

UC Union, dragging cone and assembly of the multi-spindle head.

CM Multi-spindle head with fixed or adjustable spindle.

GM Multi-spindle head guide rod.

PM START/STOP and emergency STOP control extension.

SC 8" column riser for greater distance between spindle nose and worktable

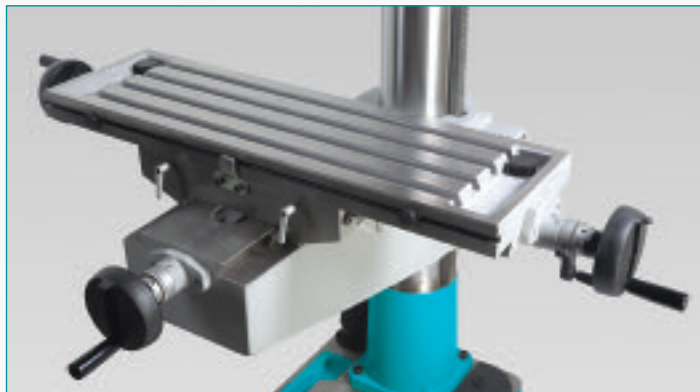
Cross Slide Tables

Series K/L



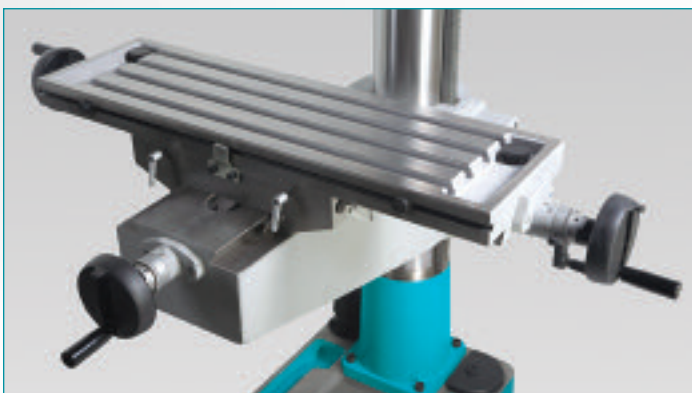
MCC-KT 13.8" x 10.8" Cross Slide Table for KL & TL models

Series X/Z



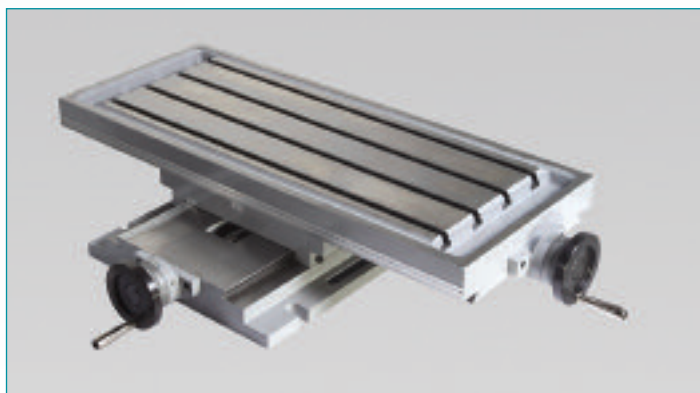
MCC-XZ 15" x 8.7" Cross Slide Table for X32/34 & Z32/34 models

Series K/L



MCC-X40 15" x 8.7" Cross Slide Table for X40 & Z40 Models

Series K/L



MB-5D 18.5" x 11.8" Cross Slide Table for A, B & C models