



Clousing Drills are equipped with a Spindle Guard that locks in an upright position, away from spindle nose, for easy tool changes.

**Style A
Floor Drill**

22" x 19.5" (559 x 495mm) Table, 66" (1676mm) column standard and 1/2" cored T-slots on 9" centers for table and base.
SEE MODELS

**Clousing 20" (508mm)
Variable Speed Drills**

Dial to the best rpm for the tool and material while the job is running, with a Clousing Two Speed Variable Speed Drill Press.

- 150 to 2000 rpm... speeds to drill large holes, small holes to spot face, counterbore and ream.
- A flip of the switch changes from low range to high range, perfect for production applications with quick change tooling.
- Greater capacity too with Clousing Two Speed, production rated 1" in cast iron, 3/4" in steel *with optional power feed.*

Handle more jobs ... better, faster with a Clousing 20" (LOW/HIGH drill press).

More Features for Superior Performance...

- **Heavy-duty precision head...** all bearing surfaces are precision bored simultaneously for exact alignment. Eight ball bearings support the drive and spindle, lower spindle bearing has a double row to absorb both radial and thrust loads.
- **3MT spindle...** with 6-1/2" travel, 2-1/2" diameter quill and thread adjustable depth stop.
- 4" column with 3/16" thick wall for great rigidity and accuracy.
- Precision ground 22" x 19" coolant trough table, handles large parts and fixtures.



**Style B
Head & Column
Assembly**
mounted on optional 20-501 Table Assembly*
SEE MODELS

*Shown with optional table assembly

**Powerful
Countershaft Drive**



- Three V-belts and a cog belt transmit positive power to the spindle.

Clousing's heavy-duty drive delivers full power to spindle at all speeds.

Clausing 20" (508mm) Drill Specifications & Electrical Options

Specifications:

Capacity, Hand Feed	1.25" (31.75mm) Dia.
Production Rated, with Optional Power Feed, 1-1/2 Hp Motor	1" (25.4mm) in Cast Iron 3/4" (19mm) in Mild Steel
Drill to Center of Circle	20" (508mm) Dia.
Spindle Nose	No. 3MT, 1.74" (44.2mm) OD
Spindle Travel	6.5" (165mm)
Column	Ground Steel, 4" (102mm) Dia., 3/8" (9.5mm) Thick Wall
Quill (Ground Steel)	2.5" (63.5mm) Dia.
Quill Return Spring, Capacity	40 lbs. (18kg)
TABLE, DRILL PRESS Style A	
Working Surface	22" x 19.5" (559 x 495mm)
Table slots	Two, 15.5" (394mm) Long, for .5" (12.7mm) T-bolt
Table Load Capacity	350 lbs. (159kg)
Table Travel, One Setting	20" (508mm)
Spindle to Table, Maximum	33.125" (841mm)
BASE, DRILL PRESS Style A	
Working Surface, Ground	15.5" x 13" (394 x 330mm)
Base T-slots	Two, 13" (330mm) Long, for .5" T-bolt
Spindle to Base, Maximum	43.375" (1102mm)
DRILL PRESS Style B	
Column Bracket to Center of Spindle	9.25" (235mm)
Column to Center of Spindle	10" (254mm)
Spindle to Table, Max. Distance	25.437" (646mm)
Column Length	43" (1092mm)
Min. Center to Center Distance	20" (508mm)
Motor ... NEMA Frame Sizes	182 and 184
Shipping Weights, Approximate, with Motors	
Drill Press Style A	630 lbs. (286kg)
Drill Press Style B	390 lbs. (177kg)

FLOOR MODELS FURNISHED with: No. 3MT spindle; table elevating mechanism; switch; belt guard; spindle guard. Motors and switches are installed and wired, ready to connect to power.

Design and specifications are subject to change without notice.

Infinitely Variable Speed Countershaft Drive

MODEL SELECTION CHART	Style A	Style B
Motor Furnished	Floor Drill 22" x 19" Table	Head & Column Assembly
Two Speed Infinitely Variable Speeds: 150-2000 rpm 1-1/2 - 3/4 Hp		
2-speed, 3-phase, 220v*	2276	2286-300
2-speed, 3-phase, 440v*	2277	2287-300
Infinitely Variable Speeds: 200-1300 rpm 1-1/2 Hp		
1½ Hp, 3-ph, 1140 rpm	2275	2285-300
Infinitely Variable Speeds: 300-2000 rpm 1-1/2 Hp		
1½ Hp, 1-ph, 1725 rpm	2272	2282-300
1½ Hp, 3-ph, 1725 rpm	2274	2284-300

*Motor, 1½-¾ hp 1800/900 rpm, 60hz. SPECIFY VOLTAGE... When voltage is not specified, motor will be wired on lower voltage. Motors are ball bearing. 3-phase single speed motors are 208/220/440v, 60hz. Single-phase motors are capacitor-start, 115/230v, 60hz.

**Head and Column Models Furnished with: No. 3MT spindle, head elevating mechanism, column, mounting flange, switch and belt guard. Motor and switches are installed and wired, ready to connect to power.

Optional Electrical Equipment*

For Factory Installation Only

NOTE: Magnetic starters protect motor against overload, low and no voltage-Thermal Overload Unit NOT required.

For Single Speed Motor No. 2371 MAGNETIC STARTER.*

Protects motor against overload, low and no voltage. Motor will not automatically restart when power is restored. Transformer provides 110v at start/stop push button. 6 lbs.

No. 2371-15 MAGNETIC STARTER for 3-phase. Includes disconnect switch and 110 volt push-buttons.

No. 2377 REVERSING DRUM SWITCH for 1 & 3-phase.* Protects motor against overload, low and no voltage. Motor will not automatically restart when power is restored. Transformer provides 110v at start/stop push button switch. 6 lbs.

For 2-Speed Motor

No. 2375 MAGNETIC STARTER and REVERSING DRUM SWITCH, with reverse on low speed. * Protects motor against overload, low and no voltage. Motor will not automatically restart when power is restored. Transformer provides 110v at start/stop push button switch. 6 lbs.

*Controls for field installation, and for single phase ... price on application.

Overall Dimensions	Width	Depth	Height
Drill Press Style A	22" (559mm)	36" (914mm)	69" (1753mm)
Drill Press Style B	20" (508mm)	3.25" (870mm)	51.625" (1311mm)



****Style B
Head &
Column
Assembly**
43" (1092mm)
Column Standard

Clausing 20" (508mm) Multiple Spindle Drill Presses

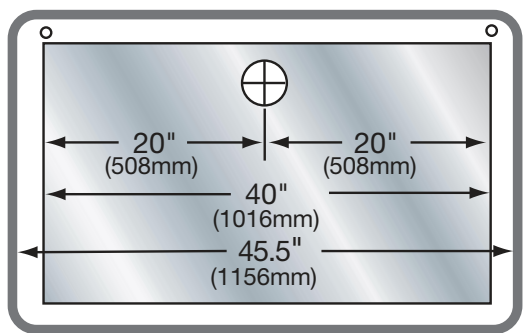
Clausing multiple spindle drills can be custom built with up to four 20" heads. When ordering a multiple spindle drill press use the table model number below, plus the appropriate head and column assemblies for the corresponding number of heads.

Mix and match any number of drill heads as your requirements demand. **Example:** If you wish to have a 3 spindle drill press with three-20" heads you would order (1) 20-503 table assembly and (3) 2286-300 20" head assemblies. Tell us the order to mount the heads and you have the 3-spindle drill you require.

If you have special requests, contact us for a quotation. Special orders priced on application.

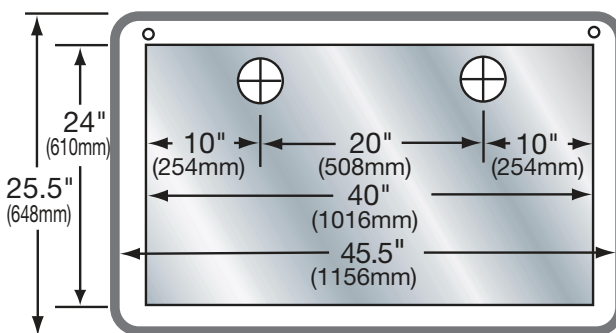


20-501 • 1-Spindle

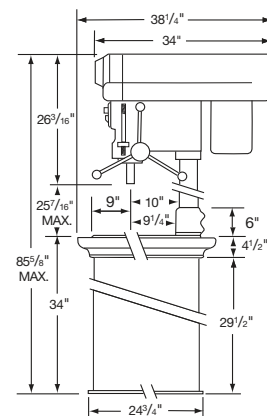


One Piece Table, Two Legs Furnished

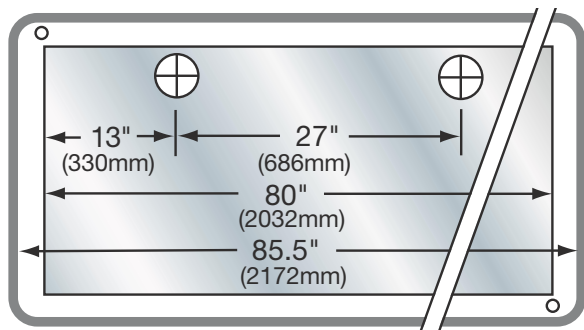
20-502 • 2-Spindle



One Piece Table, Two Legs Furnished

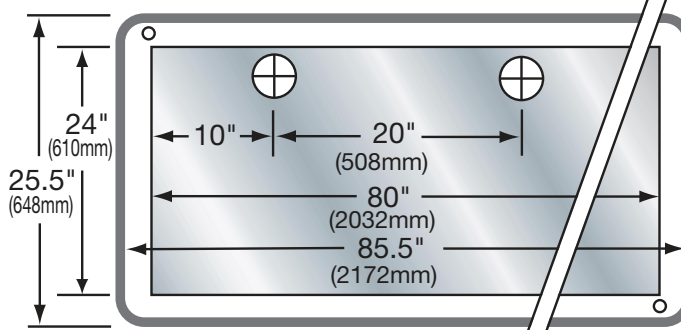


20-503 • 3-Spindle



One Piece Table, Two Legs Furnished

20-504 • 4-Spindle



One Piece Table, Two Legs Furnished

Clausing 20" (508mm) Drill Accessories

Programmable Macro-Driller Power Feed



No. 2215-1 or 2215-1/440 (for 440v machines)

The Programmable Macro-Driller can be installed on any model of Clausing 20" drill press, either at time of purchase or as a retrofit. It allows you to automate hole drilling and is most effective on deep hole 'Peck' drilling. Peck drilling is used to prevent shavings from tangling with the drill bit and breaking it. The up and down motion of 'peck drilling' allows the drill to go slightly deeper into the material then with drawing to pull the chips out of the hole. The Programmable Macro-Driller is easy to program by using the keypad.

Programmable Macro-Driller Specification

Quill Travel:	6.4" (62mm)
Feedrate Range:	0.01 - 120 ipm (0.25 - 3000mm/min)
Peck Steps:	0.001" - 6.4" (0.02 - 162mm)
Maximum Pecks per Hole:	1400
Accurate Hole Depth:	±0.001" (0.02mm)
Maximum Quill Force:	1250 lbs. (568kg)
LED Numerals:	5/8" (15.9mm) High
Control Power:	220/230 volt, 50/60 Hz Single or Three Phase
Max. Drilling Capacity:	3/4" (19mm) in Cast Iron 5/8" (16mm) in Mild Steel

Electric Foot Control

No. 302 Electric Foot Control

No. 302R1 Electric Foot Control with reversing drum switch for single speed drill

No. 302R2 Electric Foot Control with reversing drum switch for two speed drills Start and stop drill from foot pedal



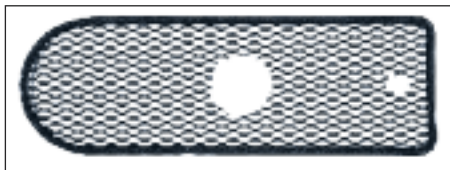
Columns

No. 2294-AMT 66" (1676mm) Column in lieu of 43" (1092mm) Column 78 lbs. (35kg)

No. 2349-AMT 90" (2286mm) Column in lieu of 66" (1676mm) Column 107 lbs. (49kg)

Mesh Guard

No. SK-208
Top Mesh
Belt Guard



Coolant System

No. 7044 Coolant System. 5 gallon capacity, 110 volt, 60 cycle single-phase motor, for single spindle drills. Flexible nozzle with regulator valve, plastic hose, clamps, fittings, cord and plug. 18 lbs.

No. 7044-2 Coolant System. For two (2)

spindle drills. 5 gallon capacity, 110 volt, 60 cycle single-phase motor. Complete with all valves, hose, fittings, cord and plug.

No. 7044-3 Coolant System. For three (3) spindle drills. Like No. 7044-2 except arranged for 3 spindles.

No. 7044-4 Coolant System. For four (4) spindle drills. Like No. 7044-3 except arranged for 4 spindles.



Drill Press Lamp

No. 7022 Lamp.

Cool burn-proof shade, aluminum reflector, switch, 19" (483mm) flexible arm, magnetic base, 6' (1.5m) cord and plug.



Drill Press LED Light

No. 20-LED LED Light

The New Clausing 120v LED Work Light mounts in the slot under the Drill Head behind the spindle.

The three ultra bright LED lights provides ample lighting over the entire work area.



Drill Chuck and Arbor



No. 1897 Key-Type Chuck. Takes 3/16" (4.8mm) to 3/4" (19mm) Drills. Adapts to 3MT Spindle with No. 1898 arbor. 4 lbs. (1.8kg)

No. 1898 Arbor. Adapts No. 1897 to 3MT Spindle. 1 lb. (.5kg)

Electronic DRO

No. 20-900



- Easy to read LCD display
- Data output port
- 0" - 6" measuring range
- 0.005" (0.01mm) resolution
- 59 in./sec. measuring speed

Clausing/Ibarmia Series T Geared-drive Round Column Drills

**A heavy-duty Industrial Drilling Machine,
designed for easy operation with manual feed**

Standard Features and Equipment:

- Drilling capacity in steel: 1" (25mm) maximum
- Drilling capacity in cast iron: 1.18" (30mm) maximum
- Tapping capacity in steel: .71" (18mm) maximum
- Tapping capacity in cast iron: .87" (22mm) maximum
- Depth scale and adjustable depth stop
- **"RS"** models are equipped with automatic feed reversing system for tapping
- Thermomagnetic switch
- Spindle reversing switch
- Automatic tool ejector
- Emergency STOP
- High/Low speed range selector
- Drill guard with microswitch

Optional Equipment:

- Floor Cabinet with Shelves
- Floor Cabinet with Drawer and Door
- Rotating Table (TM/TL Models)
- Cross Slide Table
- Cycle Start Foot Pedal
- Foot Pedal for Reversing
- Work Light with Magnetic Base
- Coolant System with Independent Container



TL25



*Optional
PKB
Cabinets*



TM25



TS25

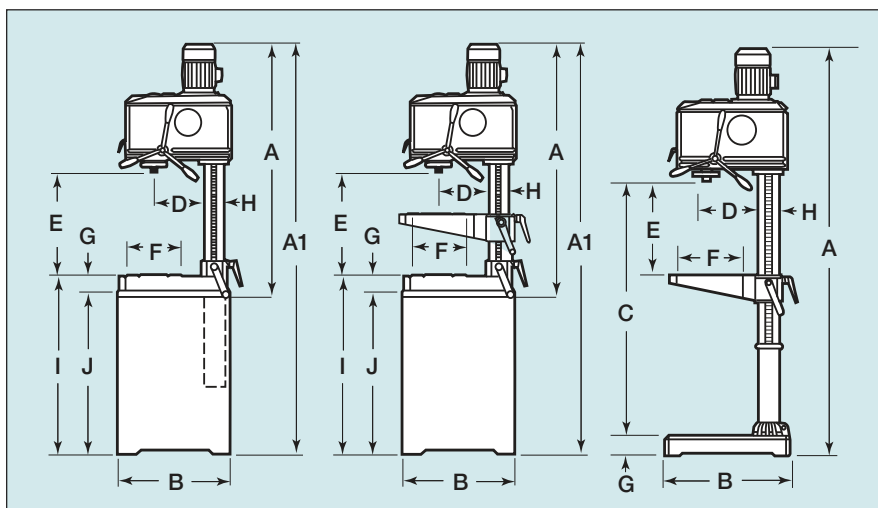
Capacities, Specifications and Dimensions:

Standard Models Auto feed reversing for tapping models	TS25 TS25RS	TM25 TM25RS	TL25 TL25RS
Capacities:			
Maximum Drilling Capacity in Steel	1" (25mm)	1" (25mm)	1" (25mm)
Maximum Drilling Capacity in Cast Iron	1.18" (30mm)	1.18" (30mm)	1.18" (30mm)
Maximum Tapping Capacity in Steel	.71" (18mm)	.71" (18mm)	.71" (18mm)
Maximum Tapping Capacity in Cast Iron	.87" (22mm)	.87" (22mm)	.87" (22mm)
Drill Head:			
Spindle Taper	3MT	3MT	3MT
Quill Diameter	2.44" (62mm)	2.44" (62mm)	2.44" (62mm)
Spindle Travel (Drilling Depth)	4.72" (120mm)	4.72" (120mm)	4.72" (120mm)
Main Motor Power	1/1.5 hp (.73/1.1 Kw)		
No. of Speeds (See Speed Charts)	8	8	8
Dimensions and Weights:			
Height (A)	47.6" (1210mm)	48.4" (1230mm)	75.8" (1925mm)
Height (A1)	79.1" (2010mm)	79.9" (2030mm)	-
Base: Length x Width (B)	22" x 15" (560x380mm)	22" x 15" (560x380mm)	24" x 15" (600x380mm)
Base to Spindle (C)	See (E)	20.9" (530mm)	47.6" (1210mm)
Spindle Center to Column (D)	9.84" (250mm)	9.84" (250mm)	9.84" (250mm)
Spindle to Table (E)			
Minimum	4.33" (110mm)	1.18" (30mm)	4.13" (105mm)
Maximum	19.7" (500mm)	12.6" (320mm)	25.2" (640mm)
Worktable: Length x Width (F)	-	10.6" x 11.8" (270 x 300mm)	
Base Height (G)	3.1" (80mm)	3.1" (80mm)	3.7" (95mm)
Column Diameter (H)	3.94" (100mm)	3.94" (100mm)	3.94" (100mm)
Floor to Top of Base (I)	34.6" (880mm)	34.6" (880mm)	-
Cabinet Height (J)	31.5" (800mm)	31.5" (800mm)	-
Net Weight	298 lbs. (135kg)	364 lbs. (165kg)	408 lbs. (185kg)
Shipping Weight	353 lbs. (160kg)	419 lbs. (419kg)	496 lbs. (225kg)
Shipping Dimension (L x W x H)	20" x 32" x 55" (.5 x .8 x 1.4m)	20" x 32" x 55" (.5 x .8 x 1.4m)	20" x 36" x 75" (.5 x .9 x 2.1m)

Standard Motor: 1800/3600 rpm

Spindle Speeds (rpm)

90-192-300-504-612-1020-1740-3360



Optional Cross Slide Table



Clausing/Ibarria Series Z32 Belt-drive Round Column Drills

With Manual or Mechanical Clutch

Select the Z series step pulley or variable speed belt-drive Industrial Drilling Machine that is right for the job. The SZ32 model is equipped with manual feed and step pulley drive and the AZ32V model is equipped with a mechanical clutch and mechanical variable speed drive.

Standard Features and Equipment:

- Drilling capacity in steel: up to 1.26" (32mm) maximum
- Drilling capacity in cast iron: up to 1.38" (35mm) maximum
- Tapping capacity in steel: up to .87" (30mm) maximum
- Tapping capacity in cast iron: up to 1.18" (30mm) maximum
- Automatic feed reversing system for tapping on "RS" models
- Machine base with 2 T-slots, coolant tank and pump
- Large work table with 3 T-slots
- Feed crank wheel for manual feed
- Depth scale and adjustable depth stop
- Automatic tool ejector
- Spindle reversing switch
- Work light
- Built-in low voltage electrical equipment in machine head
- Emergency STOP
- Drill guard with microswitch

Optional Equipment:

- Rotating Table
- Rotating Table and Tilting Support
- Digital rpm Counter (for "V" Models)
- Union, Dragging Cone and Assembly for Multi-spindle Head
- Wheeled Base
- Cross Slide Table
- Cycle Start Foot Pedal
- Foot Pedal for Reversing
- Work Light with Magnetic Base
- Coolant System with Independent Container



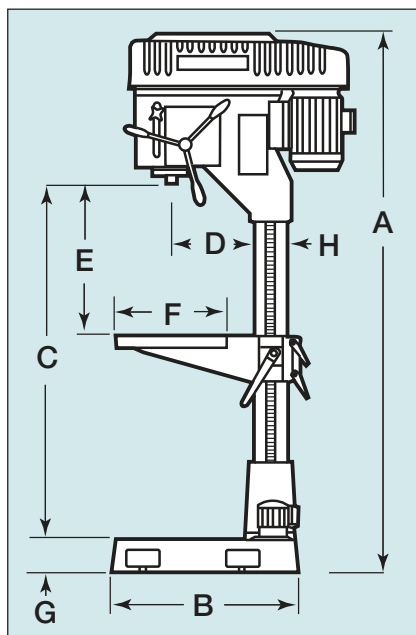
Optional Cross Slide Table



Optional Rotating Table

Capacities, Specifications and Dimensions:

Standard Models Auto feed reversing for tapping models	SZ32	AZ32V AZ32VRS
Capacities:		
Maximum Drilling Capacity in Steel	1.26" (32mm)	1.26" (32mm)
Maximum Drilling Capacity in Cast Iron	1.38" (35mm)	1.38" (35mm)
Maximum Tapping Capacity in Steel	.87" (22mm)	.87" (22mm)
Maximum Tapping Capacity in Cast Iron	1.18" (30mm)	1.18" (30mm)
Drill Head:		
Spindle Taper	3MT	3MT
Quill Diameter	2.56" (65mm)	2.56" (65mm)
Spindle Travel (Drilling Depth)	5.91" (150mm)	5.91" (150mm)
Main Motor Power	1.2/1.8 hp (.9/1.3kw)	1.2/1.8 hp (.9/1.3kw)
Coolant Pump Motor Power	.1 hp (.07kw)	.1 hp (.07kw)
Number of Speeds	10	Infinitely Variable
Number of Automatic Feeds	-	2
Auto Feed Range: in./rev. (mm/rev)	-	.0039/.0079 (0.1-0.2)
Dimensions and Weights:		
Height (A)	76.8" (1950mm)	76.8" (1950mm)
Base: Length x Width (B)	26.8" x 16.5" (680 x 420mm)	26.8" x 16.5" (680 x 420mm)
Base to Spindle (C)	50.59" (1285mm)	50.59" (1285mm)
Spindle Center to Column (D)	11.81" (300mm)	11.81" (300mm)
Spindle to Table (E)		
Minimum	6.7" (170mm)	6.7" (170mm)
Maximum	32.87" (835mm)	32.87" (835mm)
Worktable: Length x Width (F)	15.75" x 18.9" (400 x 480mm)	15.75" x 18.9" (400 x 480mm)
Base Height (G)	4.72" (120mm)	4.72" (120mm)
Column Diameter (H)	4.92" (125mm)	4.92" (125mm)
Net Weight	573 lbs. (260kg)	639 lbs. (290kg)
Shipping Weight	683 lbs. (310kg)	750 lbs. (340kg)
Shipping Dimension (L x W x H)	24" x 44" x 91" (.6 x 1.1 x 2.3m)	24" x 44" x 91" (.6 x 1.1 x 2.3m)



Standard Motor: 2 Speed 900/1800 rpm

Model	Spindle Speeds (rpm)
SZ32	900 rpm: 170-265-415-650-1035 1800 rpm: 340-530-830-1300-2070
AZ32V	Infinitely Variable: 96-1405 rpm

Standard Fixed Table Models

Model	Description (Dimension See Page 29)
1SZ32	23.6" (600mm) Drill with Fixed Table
1AZ32V	23.6" (600mm) Drill with Fixed Table
1AZ32VRS	23.6" (600mm) Drill with Fixed Table and Tapping System

“RS” models are equipped with automatic feed reversing system for tapping.



AZ40

Clausing/Ibarmia Series Z 34/40 Belt-drive Round Column Drills

***With Manual, Mechanical Clutch or
Electromagnetic Clutch Feed Control***

Select the Z series electronic variable speed belt-drive Industrial Drilling Machine that is right for the job. SZ models are equipped with manual feed, AZ models are equipped with a mechanical clutch automatic feed control and the BZ models are equipped with electromagnetic automatic feed control.

Standard Features and Equipment:

- Drilling capacity in steel: up to 1.57" (40mm) maximum
- Drilling capacity in cast iron: up to 1.77" (45mm) maximum
- Tapping capacity in steel: up to 1.30" (33mm) maximum
- Tapping capacity in cast iron: up to 1.54" (39mm) maximum
- Automatic feed reversing system for tapping
- Digital rpm counter
- Machine base with 2 T-slots, coolant tank and pump
- Large rotating work table with 3 T-slots
- Feed crank wheel for manual feed
- Depth scale and adjustable depth stop
- Automatic tool ejector
- Spindle reversing switch
- Work light
- Built-in low voltage electrical equipment in machine head
- Emergency STOP
- Drill guard with microswitch

Optional Equipment:

- Rotating Table
- Rotating Table and Tilting Support
- Union, Dragging Cone and Assembly for Multi-spindle Head
- Wheeled Base
- Cross Slide Table
- Cycle Start Foot Pedal
- Foot Pedal for Reversing
- Work Light with Magnetic Base
- Coolant System with Independent Container



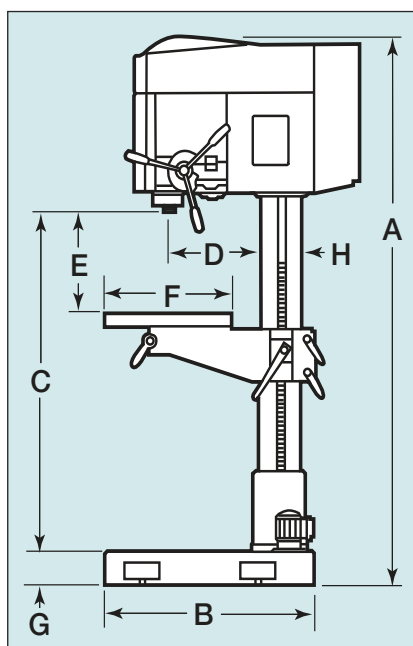
Optional Cross Slide Table



Optional Rotating Table

Capacities, Specifications and Dimensions:

Standard Models	SZ/AZ/BZ34	SZ/AZ/BZ40
Capacities:		
Maximum Drilling Capacity in Steel	1.34" (34mm)	1.57" (40mm)
Maximum Drilling Capacity in Cast Iron	1.57" (40mm)	1.77" (45mm)
Maximum Tapping Capacity in Steel	1.06" (27mm)	1.30" (33mm)
Maximum Tapping Capacity in Cast Iron	1.30" (33mm)	1.54" (39mm)
Drill Head:		
Spindle Taper	4MT	4MT
Quill Diameter	2.95" (75mm)	2.95" (75mm)
Spindle Travel (Drilling Depth)	5.9" (150mm)	7.09" (180mm)
Main Motor Power	3 hp (2.2kw)	4 hp (3kw)
Coolant Pump Motor Power	.1 hp (.07kw)	.1 hp (.07kw)
Spindle Speeds (Electronic Variable Speed)	100-2000 rpm	100-2000 rpm
Number of Automatic Feeds	3	3
Auto Feed Range: in./rev. (mm/rev)	.0039/.0079/.0118 (0.1-0.2-0.3)	.0039/.0079/.0118 (0.1-0.2-0.3)
Dimensions and Weights:		
Height (A)	76.5" (1945mm)	76.8" (1950mm)
Base: Length x Width (B)	29.1" x 16.2" (740 x 412mm)	31.5" x 18.8" (800 x 476mm)
Base to Spindle (C)	48.4" (1230mm)	48.4" (1230mm)
Spindle Center to Column (D)	11.81" (300mm)	13.78" (350mm)
Spindle to Table (E)		
Minimum	1.97" (50mm)	1.97" (50mm)
Maximum	28.5" (725mm)	27.2" (690mm)
Worktable: Length x Width (F)	15.75" x 18.9" (400 x 480mm)	18.9" x 22.05" (480 x 560mm)
Base Height (G)	4.72" (120mm)	4.72" (120mm)
Column Diameter (H)	4.92" (125mm)	5.91" (150mm)
Net Weight	794 lbs. (360kg)	1,014 lbs. (460kg)
Shipping Weight	904 lbs. (410kg)	1,124 lbs. (510kg)
Shipping Dimension (L x W x H)	92" x 24" x 42" (2.34 x .61 x 1.06m)	92" x 24" x 42" (2.34 x .61 x 1.06m)



Standard Motor: 1800 rpm

Model	Spindle Speeds (rpm)
AZ34	Electronic Variable: 100-2000 rpm
AZ40	Electronic Variable: 100-2000 rpm

Optional Spindle Motors

Motor	Speed Range
1800-3600 rpm	340-4140 rpm

Standard Fixed Table Models

Model	Description (Dimension see page 29)
1SZ34	23.6" (600mm) Drill with Fixed Table and Tapping System
1AZ34	23.6" (600mm) Drill with Fixed Table and Tapping System
1BZ34	23.6" (600mm) Drill with Fixed Table and Tapping System
1SZ40	23.6" (600mm) Drill with Fixed Table and Tapping System
1AZ40	23.6" (600mm) Drill with Fixed Table and Tapping System
1BZ40	23.6" (600mm) Drill with Fixed Table and Tapping System



AX32

Clausing/Ibarmia Series X32 Geared-drive Round Column Drills

With Manual or Mechanical Clutch

The X series range of easy to operate Industrial Drilling Machines offer a variety of capacities and feeds. Engineered for a long work life the X series drills are a great value. SX models are equipped with manual feed, AX models are equipped with a mechanical clutch automatic feed control.

Standard Features and Equipment:

- Drilling capacity in steel: up to 1.26" (32mm) maximum
- Drilling capacity in cast iron: up to 1.38" (35mm) maximum
- Tapping capacity in steel: up to .87" (18mm) maximum
- Tapping capacity in cast iron: up to 1.18" (22mm) maximum
- Automatic feed reversing system for tapping on "RS" models
- Hardened and ground high quality steel gears
- Speed plate and selecting levers on front of head
- Gear box lubrication by automatic pump
- Machine base with 2 T-slots, coolant tank and pump
- Large work table with 3 T-slots
- Feed crank wheel for manual feed
- Depth scale and adjustable depth stop
- Automatic tool ejector
- Work light
- Built-in low voltage electrical equipment in machine head
- Emergency STOP
- Drill guard with microswitch

Optional Equipment:

- Rotating Table
- Rotating Table and Tilting Support
- Automatic Pitch Control Tapping with Single Speed Brake Motor
- Automatic Pitch Control Tapping with Pneumatic Rapid Approach
- Master Guide Spindle and Nut Set for Automatic Pitch Control Tapping
- Union, Dragging Cone and Assembly for Multi-spindle Heads
- Wheeled Base
- Cross Slide Table
- Cycle Start Foot Pedal • Foot Pedal for Reversing
- Work Light with Magnetic Base
- Coolant System with Independent Container



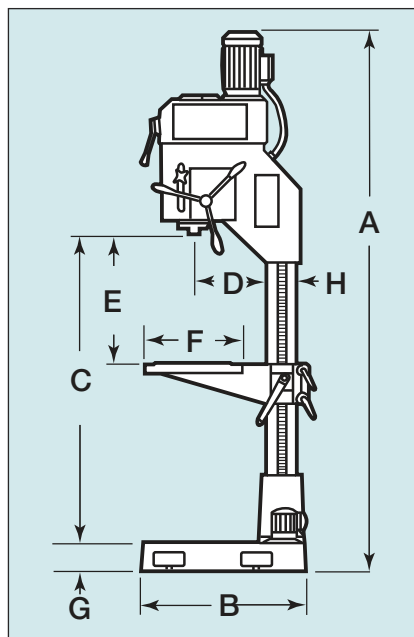
Optional Cross Slide Table



Optional Rotating Table

Capacities, Specifications and Dimensions:

Standard Models Auto feed reversing for tapping models	SX32 SX32RS	AX32 AX32RS
Capacities:		
Maximum Drilling Capacity in Steel	1.26" (32mm)	1.26" (32mm)
Maximum Drilling Capacity in Cast Iron	1.38" (35mm)	1.38" (35mm)
Maximum Tapping Capacity in Steel	.87" (22mm)	.87" (22mm)
Maximum Tapping Capacity in Cast Iron	1.18" (30mm)	1.18" (30mm)
Drill Head:		
Spindle Taper	3MT	3MT
Quill Diameter	2.56" (65mm)	2.56" (65mm)
Spindle Travel (Drilling Depth)	5.91" (150mm)	5.91" (150mm)
Main Motor Power	1.5 hp (1.1kw)	1.5 hp (1.1kw)
Coolant Pump Motor Power	.1 hp (.07kw)	.1 hp (.07kw)
Number of Speeds	9	9
Number of Automatic Feeds	-	2
Auto Feed Range: in./rev. (mm/rev)	-	.0039/.0079 (0.1-0.2)
Dimensions and Weights:		
Height (A)	87.4" (2220mm)	87.4" (2220mm)
Base: Length x Width (B)	26.8" x 16.5" (680 x 420mm)	26.8" x 16.5" (680 x 420mm)
Base to Spindle (C)	50.39" (1280mm)	50.39" (1280mm)
Spindle Center to Column (D)	11.81" (300mm)	11.81" (300mm)
Spindle to Table (E)		
Minimum	5.71" (145mm)	5.71" (145mm)
Maximum	31.89" (810mm)	31.89" (810mm)
Worktable: Length x Width (F)	15.75" x 18.9" (400 x 480mm)	15.75" x 18.9" (400 x 480mm)
Base Height (G)	4.72" (120mm)	4.72" (120mm)
Column Diameter (H)	4.92" (125mm)	4.92" (125mm)
Net Weight	694 lbs. (315kg)	728 lbs. (330kg)
Shipping Weight	794 lbs. (360kg)	827 lbs. (375kg)
Shipping Dimension (L x W x H)	24" x 44" x 91" (.6 x 1.1 x 2.3m)	24" x 44" x 91" (.6 x 1.1 x 2.3m)



Standard Motor: 1800 rpm

Spindle Speeds SX32, AX32

123-180-257-295-432-617-820-1200-1714 rpm

Optional Spindle Motors

Motor	Speed Range
1200 rpm	63-1000 rpm
3600 rpm	250-3480 rpm
900/1800 rpm	63-1000 rpm
1800-3600 rpm	123-3428 rpm

Standard Fixed Table Models

Model	Description (Dimension See Page 29)
1SX32	23.6" (600mm) Drill with Fixed Table
1SX32RS	23.6" (600mm) Drill with Fixed Table and Tapping System
1AX32	23.6" (600mm) Drill with Fixed Table
1AX32RS	23.6" (600mm) Drill with Fixed Table and Tapping System

"RS" models are equipped with automatic feed reversing system for tapping.



BX34

Clausing/Ibarmia Series X 34/40 Geared-drive Round Column Drills

***With Manual, Mechanical Clutch or
Electromagnetic Clutch Feed Control***

The X series range of easy to operate Industrial Drilling Machines offer a variety of capacities and feeds. Engineered for a long work life the X series drills are a great value. SX models are equipped with manual feed, AX models are equipped with a mechanical clutch automatic feed control and the BX models are equipped with electromagnetic automatic feed control.

Standard Features and Equipment:

- Drilling capacity in steel: up to 1.57" (40mm) maximum
- Drilling capacity in cast iron: up to 1.77" (45mm) maximum
- Tapping capacity in steel: up to 1.30" (33mm) maximum
- Tapping capacity in cast iron: up to 1.54" (39mm) maximum
- Automatic feed reversing system for tapping on "RS" models
- Hardened and ground high quality steel gears
- Speed plate and selecting levers on front of head
- Gear box lubrication by automatic pump
- Machine base with 2 T-slots, coolant tank and pump
- Large rotating work table with 3 T-slots
- Feed crank wheel for manual feed
- Depth scale and adjustable depth stop
- Automatic tool ejector
- Work light
- Built-in low voltage electrical equipment in machine head
- Emergency STOP
- Drill guard with microswitch

Optional Equipment:

- Rotating Table and Tilting Support
- Automatic Pitch Control Tapping with Single Speed Brake Motor
- Automatic Pitch Control Tapping with Pneumatic Rapid Approach
- Master Guide Spindle and Nut Set for Automatic Pitch Control Tapping
- Union, Dragging Cone and Assembly for Multi-spindle Heads
- Wheeled Base
- Cross Slide Table • Cycle Start Foot Pedal
- Foot Pedal for Reversing • Work Light with Magnetic Base
- Coolant System with Independent Container



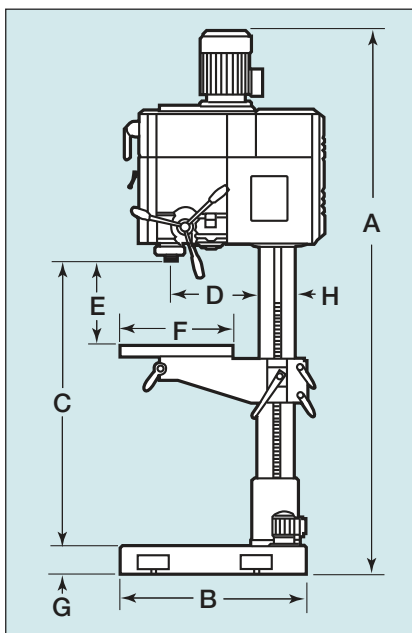
Optional Cross Slide Table



Optional Rotating Table

Capacities, Specifications and Dimensions:

Standard Models Auto feed reversing for tapping models	SX/AX/BX34 SX/AX/BX34RS	SX/AX/BX40 SX/AX/BX40RS
Capacities:		
Maximum Drilling Capacity in Steel	1.34" (34mm)	1.57" (40mm)
Maximum Drilling Capacity in Cast Iron	1.57" (40mm)	1.77" (45mm)
Maximum Tapping Capacity in Steel	1.06" (27mm)	1.30" (33mm)
Maximum Tapping Capacity in Cast Iron	1.30" (33mm)	1.54" (39mm)
Drill Head:		
Spindle Taper	4MT	4MT
Quill Diameter	2.95" (75mm)	2.95" (75mm)
Spindle Travel (Drilling Depth)	5.9" (150mm)	7.09" (180mm)
Main Motor Power	2 hp (1.5kw)	3 hp (2.2kw)
Coolant Pump Motor Power	.1 hp (.07kw)	.1 hp (.07kw)
Number Speeds	9	9
Number of Automatic Feeds	3	3
Auto Feed Range: in./rev. (mm/rev)	.0039/.0079/.0118 (0.1-0.2-0.3)	.0039/.0079/.0118 (0.1-0.2-0.3)
Dimensions and Weights:		
Height (A)	86.4" (2195mm)	90" (2285mm)
Base: Length x Width (B)	29.1" x 16.2" (740 x 412mm)	31.5" x 18.8" (800 x 476mm)
Base to Spindle (C)	48.4" (1230mm)	48.4" (1230mm)
Spindle Center to Column (D)	11.81" (300mm)	13.78" (350mm)
Spindle to Table (E)		
Minimum	1.97" (50mm)	1.97" (50mm)
Maximum	28.5" (725mm)	27.2" (690mm)
Worktable: Length x Width (F)	15.75" x 18.9" (400 x 480mm)	18.9" x 22.05" (480 x 560mm)
Base Height (G)	4.72" (120mm)	4.72" (120mm)
Column Diameter (H)	4.92" (125mm)	5.91" (150mm)
Net Weight	882 lbs. (400kg)	1,081 lbs. (490kg)
Shipping Weight	992 lbs. (450kg)	1,190 lbs. (540kg)
Shipping Dimension (L x W x H)	92" x 24" x 42" (2.34 x .61 x 1.06m)	92" x 24" x 42" (2.34 x .61 x 1.06m)



Standard Motor: 1800 rpm

Model

Spindle Speeds SX/AX/BX34 & SX/AX/BX40

158-233-332-383-559-799-1060-1555-2222 rpm

Standard Fixed Table Models

Model	Description (Dimension see page 29)
1SX34	23.6" (600mm) Drill with Fixed Table
1SX34RS	23.6" (600mm) Drill with Fixed Table and Tapping System
1AX34	23.6" (600mm) Drill with Fixed Table
1AX34RS	23.6" (600mm) Drill with Fixed Table and Tapping System
1BX34	23.6" (600mm) Drill with Fixed Table
1BX34RS	23.6" (600mm) Drill with Fixed Table and Tapping System
1SX40	27.5" (700mm) Drill with Fixed Table
1SX40RS	27.5" (700mm) Drill with Fixed Table and Tapping System
1AX40	27.5" (700mm) Drill with Fixed Table
1AX40RS	27.5" (700mm) Drill with Fixed Table and Tapping System
1BX40	27.5" (700mm) Drill with Fixed Table
1BX40RS	27.5" (700mm) Drill with Fixed Table and Tapping System

“RS” models are equipped with automatic feed reversing system for tapping.



A50

Clausing/Ibarmia Series A Geared-drive Round Column Drills With Mechanical Clutch Automatic Feed Control

The A series of Industrial Drilling Machines are capable of handling heavier workpieces with a wide range of drilling and tapping capacities. Designed for easy operation with a mechanical clutch for precise automatic feed control that can be activated from the feed crank handle or by the lever on the front of the machine head.

Standard Features and Equipment:

- Drilling capacity in steel: up to 1.97" (50mm) maximum
- Drilling capacity in cast iron: up to 2.36" (60mm) maximum
- Tapping capacity in steel: up to 1.42" (36mm) maximum
- Tapping capacity in cast iron: up to 1.65" (42mm) maximum
- Automatic feed reversing system for tapping on "RS" models
- Automatic feed and cut-off by mechanical clutch
- Hardened and ground high quality steel gears
- Speed plate and selecting levers on front of head
- Gear box lubrication by automatic pump
- Machine base with 2 T-slots, coolant tank and pump
- Large rotating work table with 3 T-slots
- Feed crank wheel for manual feed
- Front hand wheel for fine feed work
- Depth scale and adjustable depth stop
- Automatic tool ejector
- Work light
- Built-in low voltage electrical equipment in machine head
- Emergency STOP
- Drill guard with microswitch

Optional Equipment:

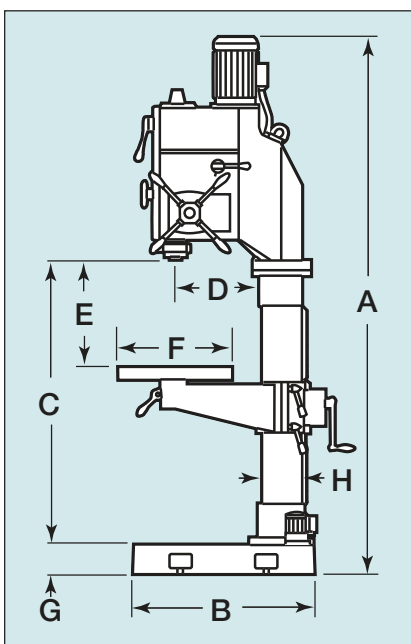
- Rotating Table and Tilting Support
- Automatic Pitch Control Tapping with Single Speed Brake Motor
- Automatic Pitch Control Tapping with Pneumatic Rapid Approach
- Master Guide Spindle and Nut Set for Automatic Pitch Control Tapping
- 50% Lower Feed Range
- Mechanical Spotface Device
- Pneumatic Counterbalance
- Multi-Spindle Head Guide Rod
- Union, Dragging Cone and Assembly for Multi-Spindle Head
- Multi-Spindle Head Guide Rod
- START-STOP and Emergency STOP Pendant Control
- 8" (200mm) Column Riser
- Cross Slide Table
- Cycle Start Foot Pedal
- Foot Pedal for Reversing
- Work Light with Magnetic Base
- Coolant System with Independent Container



Optional Cross Slide Table

Capacities, Specifications and Dimensions:

Standard Models Auto feed reversing for tapping models	A40 A40RS	A50 A50RS
Capacities:		
Maximum Drilling Capacity in Steel	1.38" (35mm)	1.97" (50mm)
Maximum Drilling Capacity in Cast Iron	1.77" (45mm)	2.36" (60mm)
Maximum Tapping Capacity in Steel	1" (27mm)	1.42" (36mm)
Maximum Tapping Capacity in Cast Iron	1.3" (33mm)	1.65" (42mm)
Drill Head:		
Spindle Taper	4MT	4MT
Quill Diameter	2.95" (75mm)	3.46" (88mm)
Spindle Travel (Drilling Depth)	7.87" (200mm)	9.06" (230mm)
Main Motor Power	2 hp (1.5kw)	4 hp (3kw)
Coolant Pump Motor Power	.1 hp (.07kw)	.1 hp (.07kw)
Number of Speeds	9	9
Number of Automatic Feeds	3	4
Auto Feed Range: in./rev. (mm/rev)	.0039/.0079/.0118/(0.1-0.2-0.3)	.0039/.0079/.0118/.0157/(0.1-0.2-0.3-0.4)
Dimensions and Weights:		
Height (A)	92.4" (2390mm)	97.4" (2475mm)
Base: Length x Width (B)	31.5" x 18.5" (800x470mm)	33.9" x 21.7" (860x550mm)
Base to Spindle (C)	47.24" (1200mm)	51.18" (1300mm)
Spindle Center to Column (D)	14.57" (370mm)	14.57" (370mm)
Spindle to Table (E)		
Minimum	4.72" (120mm)	5.91" (150mm)
Maximum	30.71" (780mm)	30.31" (770mm)
Worktable: Length x Width (F)	18.9" x 22.1" (480x560mm)	20.5" x 24.4" (520x620mm)
Base Height (G)	4.72" (120mm)	5.71" (145mm)
Column Diameter (H)	6.3" (160mm)	7.87" (200mm)
Net Weight	1,080 lbs. (490kg)	1,565 lbs. (710kg)
Shipping Weight	1,257 lbs. (570kg)	1,725 lbs. (795kg)
Shipping Dimension (L x W x H)	28" x 40" x 95" (.7 x 1 x 2.4m)	28" x 48" x 103" (.7 x 1.2 x 2.6m)



Standard Motor: 1800 rpm

Model	Spindle Speeds (rpm)
A40	73-103-149-232-325-472-695-976-1415
A50	66-91-133-206-288-418-617-856-1255

Standard Fixed Table Models

Model	Description (Dimension See Page 29)
1A40	29.5" (750mm) Drill with Fixed Table
1A40RS	29.5" (750mm) Drill with Fixed Table and Tapping
1A50	29.1" (740mm) Drill with Fixed Table
1A50RS	29.1" (740mm) Drill with Fixed Table and Tapping

Optional Spindle Motors

Model	Motor	Speed Range
A40	1200 rpm	50-948 rpm
A40	3600 rpm	146-2830 rpm
A40	900/1800 rpm	36-1415 rpm
A40	1800-3600 rpm	73-2830 rpm
A50	1200 rpm	46-878 rpm
A50	3600 rpm	132-2510 rpm
A50	900/1800 rpm	33-1255 rpm
A50	1800-3600 rpm	66-2510 rpm

"RS" models are equipped with automatic feed reversing system for tapping.



B50

Clausing/Ibarmia Series B Geared-drive Round Column Drills With Push-button Electromagnetic Clutch Automatic Feed Control

The B series is a rugged built Industrial Drilling Machine designed to handle large workpieces and offers the widest range of large capacity drilling and tapping. The B series is equipped with an electromagnetic clutch for precise automatic feed control that can be activated from any of the 4 white push-buttons built into the end of the feed crank handles.

Standard Features and Equipment:

- Drilling capacity in steel: 2.75" (70mm) maximum
- Drilling capacity in cast iron: 3.15" (80mm) maximum
- Tapping capacity in steel: 2" (50mm) maximum
- Tapping capacity in cast iron: 2.36" (60mm) maximum
- Automatic feed reversing system for tapping on "RS" models
- Automatic feed and cut-off by electromagnetic clutch
- Hardened and ground high quality steel gears
- Speed plate and selecting levers on front of head
- Gear box lubrication by automatic pump
- Machine base with 2 T-slots, coolant tank and pump
- Large rotating work table with 3 T-slots
- Feed crank wheel for manual feed
- Front hand wheel for fine feed work
- Depth scale and adjustable depth stop
- Automatic tool ejector • Work light
- Built-in low voltage electrical equipment in machine head
- Emergency STOP • Drill guard with microswitch

Optional Equipment:

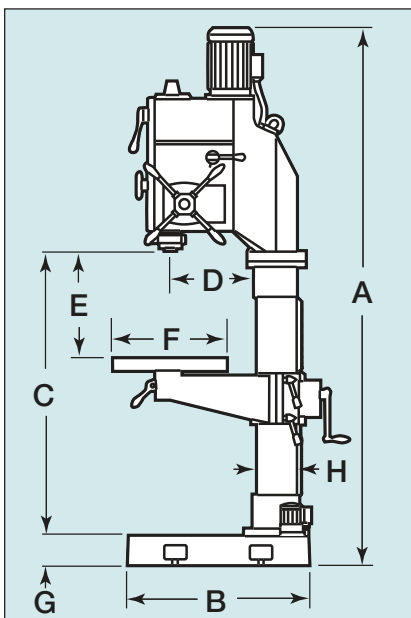
- Rotating Table and Tilting Support
- 8" (200mm) Column Riser
- Automatic Pitch Control Tapping with Single Speed Brake Motor
- Automatic Pitch Control Tapping with Pneumatic Rapid Approach
- Master Guide Spindle and Nut Set for Automatic Pitch Control Tapping
- Pneumatic Counterbalance with Rapid Approach and Retract
- Pneumatic Counterbalance with Rapid Approach and Retract for Tube and Profile Drilling
- Pneumatic Counterbalance with Rapid Approach and Retract with Pitch Controlled Tapping
- 50% Lower Feed Range • Mechanical Spotface Device
- Pneumatic Counterbalance
- Multi-spindle Head Guide Rod
- Union, Dragging Cone and Assembly for Multi-spindle Head
- START-STOP and Emergency STOP Pendant Control
- Cross Slide Table • Work Light with Magnetic Base
- Cycle Start Foot Pedal • Foot Pedal for Reversing
- Coolant System with Independent Container



Optional Cross Slide Table

Capacities, Specifications and Dimensions:

Standard Models Auto feed reversing for tapping models	B40 B40RS	B50 B50RS	B60 B60RS	B70 B70RS
Capacities:				
Maximum Drilling Capacity in Steel	1.57" (40mm)	1.97" (50mm)	2.36" (60mm)	2.75" (70mm)
Maximum Drilling Capacity in Cast Iron	2.17" (50mm)	2.36" (60mm)	2.75" (70mm)	3.15" (80mm)
Maximum Tapping Capacity in Steel	1.3" (33mm)	1.42" (36mm)	1.65" (42mm)	2" (50mm)
Maximum Tapping Capacity in Cast Iron	1.57" (40mm)	1.65" (42mm)	2" (50mm)	2.36" (60mm)
Drill Head:				
Spindle Taper	4MT	4MT	5MT	5MT
Quill Diameter	3.46" (88mm)	3.46" (88mm)	3.54" (90mm)	3.54" (90mm)
Spindle Travel (Drilling Depth)	7.87" (200mm)	9.06" (230mm)	10.24" (260mm)	10.24" (260mm)
Main Motor Power	3 hp (2.2kw)	4 hp (3kw)	5.5 hp (4kw)	7.5 hp (5.5kw)
Coolant Pump Motor Power	.1 hp (.07kw)	.1 hp (.07kw)	.12 hp (.08kw)	.12 hp (.08kw)
Number of Speeds (See Speed Charts)	9	9	12	12
Number of Automatic Feeds	4	6	6	6
	.0039/.0079/.0118/.0157 (0.1-0.2-0.3-0.4)		.0039/.0079/.0118/.0157/.0197/.0236 (0.1-0.2-0.3-0.4-0.5-0.6)	
Dimensions and Weights:				
Height (A)	92.4" (2390mm)	97.4" (2475mm)	103.9" (2640mm)	103.9" (2640mm)
Base: Length x Width (B)	31.9" x 21.3" (810x560mm)	33.9" x 21.7" (860x550mm)	35.8" x 23.2" (910x590mm)	35.8" x 23.2" (910x590mm)
Base to Spindle (C)	49.61" (1280mm)	51.18" (1300mm)	49.21" (1250mm)	49.21" (1250mm)
Spindle Center to Column (D)	15.16" (385mm)	14.57" (370mm)	15.75" (400mm)	15.75" (400mm)
Spindle to Table (E)				
Minimum	5.51" (140mm)	5.91" (150mm)	3.15" (80mm)	3.15" (80mm)
Maximum	30.71" (780mm)	30.71" (770mm)	25.98" (660mm)	25.98" (660mm)
Worktable: Length x Width (F)	18.9" x 22.1" (480x560mm)	20.5" x 24.4" (520x620mm)	23.6" x 27.6" (600x700mm)	23.6" x 27.6" (600x700mm)
Base Height (G)	5.31" (135mm)	5.71" (145mm)	6.3" (160mm)	6.3" (160mm)
Column Diameter (H)	7.09" (180mm)	7.87" (200mm)	8.66" (220mm)	8.66" (220mm)
Net Weight	1,345 lbs. (610kg)	1,587 lbs. (720kg)	1,808 lbs. (820kg)	1,852 lbs. (840kg)
Shipping Weight	1,532 lbs. (695kg)	1,725 lbs. (805kg)	2,025 lbs. (920kg)	2,072 lbs. (940kg)
Shipping Dimension (L x W x H)	28" x 40" x 103" (.7 x 1.2 x 2.6m)	28" x 40" x 103" (.7 x 1.2 x 2.6m)	32" x 52" x 111" (.8 x 1.3 x 2.8m)	32" x 52" x 111" (.8 x 1.3 x 2.8m)



Standard Motor: 1800 rpm

Model	Spindle speeds (rpm)
B40	73-103-149-232-325-472-695-976-1415
B50	66-91-133-206-288-418-617-866-1255
B60	76-96-127-165-238-296-392-513-670-838-1107-1446
B70	62-81-104-133-191-250-321-410-532-683-878-1120

Standard Fixed Table Models

Model	Description (Dimension see page 29)
1B40	29.5" (750mm) with Drill Fixed Table
1B40RS	29.5" (750mm) with Drill Fixed Table and Tapping
1B50	29.1" (740mm) with Drill Fixed Table
1B50RS	29.1" (740mm) with Drill Fixed Table and Tapping

Optional Spindle Motors

Model	Motor	Speed Range
B40	1200 rpm	50-948 rpm
B40	3600 rpm	146-2830 rpm
B40	900/1800 rpm	36-1415 rpm
B40	1800-3600 rpm	73-2830 rpm
B50	1200 rpm	46-878 rpm
B50	3600 rpm	132-2510 rpm
B50	900/1800 rpm	33-1255 rpm
B50	1800-3600 rpm	66-2510 rpm
B60	1200 rpm	54-1012 rpm
B60	3600 rpm	152-2892 rpm
B60	900/1800 rpm	38-1446 rpm
B60	1800-3600 rpm	76-2892 rpm
B70	1200 rpm	40-748 rpm
B70	3600 rpm	124-2440 rpm
B70	900/1800 rpm	31-1120 rpm
B70	1800/3600 rpm	62-2240 rpm

"RS" models are equipped with automatic feed reversing system for tapping.



BC50VE

Clausing/Barmia Series C Belt/Geared-drive Round Column Drills With Push-button Electromagnetic Clutch Automatic Feed Control

The C series of Industrial Drilling Machines are capable of handling heavier workpieces with a wide range of drilling and tapping capacities. Designed for easy operation with an electromagnetic clutch for precise automatic feed control that can be activated from the feed crank handle or by the lever on the front of the machine head.

Standard Features and Equipment:

- Drilling capacity in steel: 1.97" (50mm) maximum
- Drilling capacity in cast iron: 2.36" (60mm) maximum
- Tapping capacity in steel: 1.68" (42mm) maximum
- Tapping capacity in cast iron: 2" (50mm) maximum
- Automatic feed reversing system for tapping
- Automatic feed and cut-off by electromagnetic clutch
- Hardened and ground high quality steel gears
- Speed plate and selecting levers on front of head
- Gear box lubrication by automatic pump
- Machine base with 2 T-slots, coolant tank and pump
- Large rotating work table with 3 T-slots
- Feed crank wheel for manual feed
- Front hand wheel for fine feed work
- Depth scale and adjustable depth stop
- Automatic tool ejector • Work light
- Built-in low voltage electrical equipment in machine head
- Emergency STOP • Drill guard with microswitch

Optional Equipment:

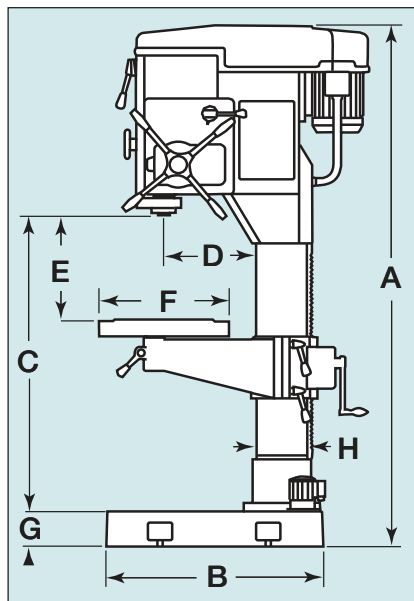
- Rotating Table and Tilting Support
- 8" (203mm) Column Riser
- Automatic Pitch Control Tapping with Single Speed Brake Motor
- Automatic Pitch Control Tapping with Pneumatic Rapid Approach
- Master Guide Spindle and Nut Set for Automatic Pitch Control Tapping
- Pneumatic Counterbalance with Rapid Approach and Retract
- Pneumatic Counterbalance with Rapid Approach and Retract for Tube and Profile Drilling
- Pneumatic Counterbalance with Rapid Approach and Retract with Pitch Controlled Tapping
- 50% Lower Feed Range
- Mechanical Spotface Device
- Pneumatic Counterbalance
- Multi-Spindle Head Guide Rod
- Union, Dragging Cone and Assembly for Multi-Spindle Head
- START/STOP and Emergency STOP Pendant Control
- Cross Slide Table • Work Light with Magnetic Base
- Cycle Start Foot Pedal • Foot Pedal for Reversing
- Coolant System with Independent Container



Optional Cross Slide Table

Capacities, Specifications and Dimensions:

Standard Models	BC40V	BC40VE	BC50V	BC50VE
Capacities:				
Maximum Drilling Capacity in Steel	1.57" (40mm)	1.57" (40mm)	1.97" (50mm)	1.97" (50mm)
Maximum Drilling Capacity in Cast Iron	1.97" (50mm)	1.97" (50mm)	2.36" (60mm)	2.36" (60mm)
Maximum Tapping Capacity in Steel	1.42" (36mm)	1.42" (36mm)	1.65" (36mm)	1.65" (36mm)
Maximum Tapping Capacity in Cast Iron	1.65" (36mm)	1.65" (36mm)	1.97" (50mm)	1.97" (50mm)
Drill Head:				
Spindle Taper	4MT	4MT	4MT	4MT
Quill Diameter	3.46" (87.9mm)	3.46" (87.9mm)	3.46" (87.9mm)	3.46" (87.9mm)
Spindle Travel (Drilling Depth)	7.87" (200mm)	7.87" (200mm)	7.87" (200mm)	7.87" (200mm)
Main Motor Power	4 hp (3kw)	4 hp (3kw)	5.5 hp (4kw)	5.5 hp (4kw)
Coolant Pump Motor Power	.1 hp (.07 kw)	.1 hp (.07kw)	.1 hp (.07kw)	.1 hp (.07kw)
No. of Variable Speeds Ranges and Type	3 mechanical	3 electronic	3 mechanical	3 electronic
Low Range (rpm)	72-240	30-230	72-240	30-230
Med Range (rpm)	240-720	90-730	240-720	90-730
High Range (rpm)	720-2200	190-1500	720-2200	190-1500
Number of Automatic Feeds	4	4	4	4
Auto Feed Range	.0039/.0079/.118/.157 (in./rev.) (0.1/0.2/0.3/0.4 mm/rev)			
Dimensions and Weights:				
Height (A)	81.9" (2080mm)	81.9" (2080mm)	83.5" (2120mm)	83.5" (2120mm)
Base: Length x Width (B)	31.9" x 26.3" (810 x 540mm)	31.9" x 26.3" (810 x 540mm)	33.9" x 21.7" (860 x 550mm)	33.9" x 21.7" (860 x 550mm)
Base to Spindle (C)	46.1" (1170mm)	46.1" (1170mm)	49" (1246mm)	49" (1246mm)
Spindle Center to Column (D)	15.15" (385mm)	15.15" (385mm)	14.56" (370mm)	14.56" (370mm)
Spindle to Table (E)				
Minimum	1.97" (50mm)	1.97" (50mm)	1.57" (40mm)	1.57" (40mm)
Maximum	27.16" (690mm)	27.16" (690mm)	26" (660mm)	26" (660mm)
Worktable: Length x Width (F)	18.9" x 22" (480 x 560mm)	18.9" x 22" (480 x 560mm)	20.5" x 24.4" (520 x 620mm)	20.5" x 24.4" (520 x 620mm)
Base Height (G)	5.31" (135mm)	5.31" (135mm)	5.71" (145mm)	5.71" (145mm)
Column Diameter (H)	7.09" (180mm)	7.09" (180mm)	7.87" (200mm)	7.87" (200mm)
Net Weight	1,455 lbs. (660kg)	1,455 lbs. (660kg)	1,675 lbs. (760kg)	1,675 lbs. (760kg)
Shipping Weight	1,653 lbs. (750kg)	1,653 lbs. (750kg)	1,874 lbs. (850kg)	1,874 lbs. (850kg)
Shipping Dimension (L x W x H)	32" x 51" x 91" (.8 x 1.3 x 2.3m)		36" x 55" x 91" (.9 x 1.4 x 2.3m)	



Standard Motor: 1800 rpm

Model	Spindle Speeds (rpm)
BC40V	Mechanical Variable Speed: 72-1800 rpm
BC50V	Mechanical Variable Speed: 36-1800 rpm
BC40VE	Electronic Variable Speed: 72-1800 rpm
BC50VE	Electronic Variable Speed: 36-1800 rpm

Standard Fixed Table Models

Model	Description
1BC40V	30.3" (770mm) Drill with Fixed Table
1BC50V	29" (736mm) Drill with Fixed Table
1BC40VE	30.3" (770mm) Drill with Fixed Table
1BC50VE	29" (736mm) Drill with Fixed Table

Clausing/Ibarmia Multi Head, Fixed Table and Oversized Table Drills

Clausing Ibarmia Industrial Drilling Machines mounted to a fixed or oversized table offer greater ease in positioning the workpiece and the flexibility to handle bulky or heavy workpieces. Multiple Head drilling machines are ideal for work where the workpiece requires more than one operation. Each drill head on a multiple head drill can be equipped differently to perform the operation required by that head such as... automatic drilling cycle, automatic tapping or other options that may be offered. Drilling machines can be set -up with rotating heads adding flexibility.

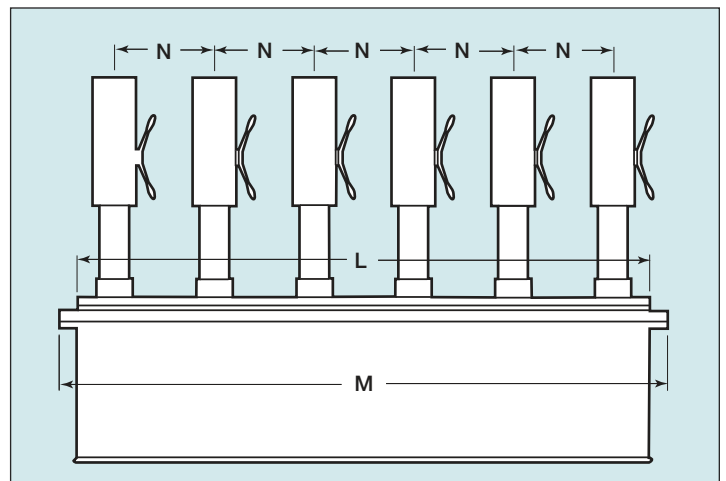
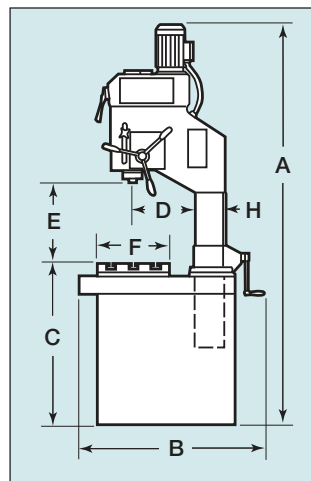
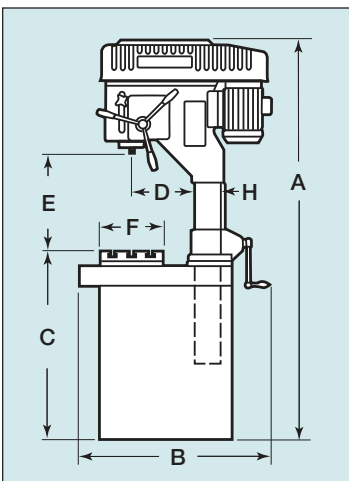


3AX32 23.6" (600mm) Geared-drive 3 head drill.



1B50 29.1" (740mm) Geared-drive drill mounted to standard fixed table.

Multiple Spindle Dimensional Drawings



Multiple Spindle Models, Size and Dimensions:

Models	Size	A	B	C	D	E		F	H	L	M	N
						min.	max.					
Fixed Table Drills (Includes RS Models)												
1SZ32, 1AZ32V	19.7"(500mm)	89.6"(2275mm)	35.8"(910mm)	35.4"(900mm)	11.8"(300mm)	9.8"(250mm)	32.6"(830mm)	15.7"(400mm)	4.9"(125mm)	15.7"(400mm)	23.6"(600mm)	-
1SZ34, 1AZ34, 1BZ34	23.6"(600mm)	87.8"(2230mm)	35.8"(910mm)	35.4"(900mm)	11.8"(300mm)	7.8"(200mm)	29.1"(740mm)	15.7"(400mm)	4.9"(125mm)	15.7"(400mm)	23.6"(600mm)	-
1SZ40, 1AZ40, 1BZ40	27.1"(690mm)	88.6"(2230mm)	40.8"(1035mm)	35.4"(900mm)	13.5"(345mm)	7.8"(200mm)	28.1"(715mm)	16.7"(500mm)	6.3"(160mm)	23.6"(600mm)	31.5"(800mm)	-
1SX32, 1AX32	23.6"(600mm)	100"(2540mm)	35.8"(910mm)	35.4"(900mm)	11.8"(300mm)	8.6"(220mm)	31.5"(800mm)	15.7"(400mm)	4.9"(125mm)	15.7"(400mm)	23.6"(600mm)	-
1SX34, 1AX34, 1BX34	23.6"(600mm)	97.6"(2480mm)	35.8"(910mm)	35.4"(900mm)	11.8"(300mm)	8.6"(220mm)	29.1"(740mm)	15.7"(400mm)	4.9"(125mm)	15.7"(400mm)	23.6"(600mm)	-
1SX40, 1AX40, 1BX40	27.1"(690mm)	100.4"(2550mm)	40.8"(1035mm)	35.4"(900mm)	13.5"(345mm)	7.8"(200mm)	28.1"(715mm)	19.6"(500mm)	6.3"(160mm)	23.6"(600mm)	31.5"(800mm)	-
1A40, 1B40	29.5"(750mm)	107.1"(2720mm)	43.7"(1110mm)	35.4"(900mm)	14.7"(375mm)	9.8"(250mm)	32.6"(830mm)	19.6"(500mm)	7.8"(200mm)	23.6"(600mm)	31.5"(800mm)	-
1A50, 1B50	29.1"(740mm)	108.3"(2750mm)	43.5"(1105mm)	35.4"(900mm)	14.5"(370mm)	9.8"(250mm)	32.6"(830mm)	19.6"(500mm)	7.8"(200mm)	23.6"(600mm)	31.5"(800mm)	-
2 Head Drills												
2SZ32, 2AZ32	23.6"(600mm)	89.6"(2275mm)	35.8"(910mm)	35.4"(900mm)	11.8"(300mm)	9.8"(250mm)	32.6"(830mm)	11.8"(300mm)	4.9"(125mm)	35.4"(900mm)	43.3"(1100mm)	19.7"(500mm)
2SZ34, 2AZ34, 2BZ34	23.6"(600mm)	87.8"(2230mm)	35.8"(910mm)	35.4"(900mm)	11.8"(300mm)	7.8"(200mm)	29.1"(740mm)	11.8"(300mm)	4.9"(125mm)	35.4"(900mm)	43.3"(1100mm)	19.7"(500mm)
2SZ40, 2AZ40, 2BZ40	27.1"(690mm)	88.6"(2230mm)	40.8"(1035mm)	35.4"(900mm)	13.5"(345mm)	7.8"(200mm)	28.1"(715mm)	15.7"(400mm)	6.3"(160mm)	37.4"(950mm)	45.3"(1150mm)	21.6"(550mm)
2SX32, 2AX32	23.6"(600mm)	100"(2540mm)	35.8"(910mm)	35.4"(900mm)	11.8"(300mm)	8.6"(220mm)	31.5"(800mm)	11.8"(300mm)	4.9"(125mm)	35.4"(900mm)	43.3"(1100mm)	19.7"(500mm)
2SX34, 2AX34, 2BX34	23.6"(600mm)	97.6"(2480mm)	35.8"(910mm)	35.4"(900mm)	11.8"(300mm)	7.8"(200mm)	29.1"(740mm)	11.8"(300mm)	4.9"(125mm)	35.4"(900mm)	43.3"(1100mm)	19.7"(500mm)
2SX40, 2AX40, 2BX40	27.1"(690mm)	100.4"(2550mm)	40.8"(1035mm)	35.4"(900mm)	13.5"(345mm)	7.8"(200mm)	28.1"(715mm)	15.7"(400mm)	6.3"(160mm)	37.4"(950mm)	45.3"(1150mm)	21.6"(550mm)
2A40, 2B40	29.5"(750mm)	107.1"(2720mm)	43.7"(1110mm)	35.4"(900mm)	14.7"(375mm)	9.8"(250mm)	32.6"(830mm)	15.7"(400mm)	7.8"(200mm)	37.4"(950mm)	45.3"(1150mm)	21.6"(550mm)
2A50, 2B50	29.1"(740mm)	108.3"(2750mm)	43.5"(1105mm)	35.4"(900mm)	14.5"(370mm)	9.8"(250mm)	32.6"(830mm)	15.7"(400mm)	7.8"(200mm)	37.4"(950mm)	45.3"(1150mm)	21.6"(550mm)
3 Head Drills												
3SZ32, 3AZ32V	23.6"(600mm)	89.6"(2275mm)	35.8"(910mm)	35.4"(900mm)	11.8"(300mm)	9.8"(250mm)	32.6"(830mm)	11.8"(300mm)	4.9"(125mm)	55.1"(1400mm)	63"(1600mm)	19.7"(500mm)
3SZ34, 3AZ34, 3BZ34	23.6"(600mm)	87.8"(2230mm)	35.8"(910mm)	35.4"(900mm)	11.8"(300mm)	7.8"(200mm)	29.1"(740mm)	11.8"(300mm)	4.9"(125mm)	55.1"(1400mm)	63"(1600mm)	19.7"(500mm)
3SZ40, 3AZ40, 3BZ40	27.1"(690mm)	88.6"(2230mm)	40.8"(1035mm)	35.4"(900mm)	13.5"(345mm)	7.8"(200mm)	28.1"(715mm)	15.7"(400mm)	6.3"(160mm)	59.1"(1500mm)	67"(1700mm)	21.6"(550mm)
3SX32, 3AX32	23.6"(600mm)	100"(2540mm)	35.8"(910mm)	35.4"(900mm)	11.8"(300mm)	8.6"(220mm)	31.5"(800mm)	11.8"(300mm)	4.9"(125mm)	55.1"(1400mm)	63"(1600mm)	19.7"(500mm)
3SX34, 3AX34, 3BX34	23.6"(600mm)	97.6"(2480mm)	35.8"(910mm)	35.4"(900mm)	11.8"(300mm)	7.8"(200mm)	29.1"(740mm)	11.8"(300mm)	4.9"(125mm)	55.1"(1400mm)	63"(1600mm)	19.7"(500mm)
3SX40, 3AX40, 3BX40	27.1"(690mm)	100.4"(2550mm)	40.8"(1035mm)	35.4"(900mm)	13.5"(345mm)	7.8"(200mm)	28.1"(715mm)	15.7"(400mm)	6.3"(160mm)	59.1"(1500mm)	67"(1700mm)	21.6"(550mm)
3A40, 3B40	29.5"(750mm)	107.1"(2720mm)	43.7"(1110mm)	35.4"(900mm)	14.7"(375mm)	9.8"(250mm)	32.6"(830mm)	15.7"(400mm)	7.8"(200mm)	59.1"(1500mm)	67"(1700mm)	21.6"(550mm)
3A50, 3B50	29.1"(740mm)	108.3"(2750mm)	43.5"(1105mm)	35.4"(900mm)	14.5"(370mm)	9.8"(250mm)	32.6"(830mm)	15.7"(400mm)	7.8"(200mm)	59.1"(1500mm)	67"(1700mm)	21.6"(550mm)
4 Head Drills												
4SZ32, 4AZ32	23.6"(600mm)	89.6"(2275mm)	35.8"(910mm)	35.4"(900mm)	11.8"(300mm)	9.8"(250mm)	32.6"(830mm)	11.8"(300mm)	4.9"(125mm)	75"(1900mm)	82.6"(2100mm)	19.7"(500mm)
4SZ34, 4AZ34, 4BZ34	23.6"(600mm)	87.8"(2230mm)	35.8"(910mm)	35.4"(900mm)	11.8"(300mm)	7.8"(200mm)	29.1"(740mm)	11.8"(300mm)	4.9"(125mm)	75"(1900mm)	82.6"(2100mm)	19.7"(500mm)
4SZ40, 4AZ40, 4BZ40	27.1"(690mm)	88.6"(2230mm)	40.8"(1035mm)	35.4"(900mm)	13.5"(345mm)	7.8"(200mm)	28.1"(715mm)	15.7"(400mm)	6.3"(160mm)	80.7"(2050mm)	88.5"(2250mm)	21.6"(550mm)
4SX32, 4AX32	23.6"(600mm)	100"(2540mm)	35.8"(910mm)	35.4"(900mm)	11.8"(300mm)	8.6"(220mm)	31.5"(800mm)	11.8"(300mm)	4.9"(125mm)	75"(1900mm)	82.6"(2100mm)	19.7"(500mm)
4SX34, 4AX34, 4BX34	23.6"(600mm)	97.6"(2480mm)	35.8"(910mm)	35.4"(900mm)	11.8"(300mm)	7.8"(200mm)	29.1"(740mm)	11.8"(300mm)	4.9"(125mm)	75"(1900mm)	82.6"(2100mm)	19.7"(500mm)
4SX40, 4AX40, 4BX40	27.1"(690mm)	100.4"(2550mm)	40.8"(1035mm)	35.4"(900mm)	13.5"(345mm)	7.8"(200mm)	28.1"(715mm)	15.7"(400mm)	6.3"(160mm)	80.7"(2050mm)	88.5"(2250mm)	21.6"(550mm)
4A40, 4B40	29.5"(750mm)	107.1"(2720mm)	43.7"(1110mm)	35.4"(900mm)	14.7"(375mm)	9.8"(250mm)	32.6"(830mm)	15.7"(400mm)	7.8"(200mm)	80.7"(2050mm)	88.5"(2250mm)	21.6"(550mm)
4A50, 4B50	29.1"(740mm)	108.3"(2750mm)	43.5"(1105mm)	35.4"(900mm)	14.5"(370mm)	9.8"(250mm)	32.6"(830mm)	15.7"(400mm)	7.8"(200mm)	80.7"(2050mm)	88.5"(2250mm)	21.6"(550mm)
5 Head Drills												
5SZ32, 5AZ32	23.6"(600mm)	89.6"(2275mm)	35.8"(910mm)	35.4"(900mm)	11.8"(300mm)	9.8"(250mm)	32.6"(830mm)	11.8"(300mm)	4.9"(125mm)	94.5"(2400mm)	102.4"(2600mm)	19.7"(500mm)
5SZ34, 5AZ34, 5BZ34	23.6"(600mm)	87.8"(2230mm)	35.8"(910mm)	35.4"(900mm)	11.8"(300mm)	7.8"(200mm)	29.1"(740mm)	11.8"(300mm)	4.9"(125mm)	94.5"(2400mm)	102.4"(2600mm)	19.7"(500mm)
5SZ40, 5AZ40, 5BZ40	27.1"(690mm)	88.6"(2230mm)	40.8"(1035mm)	35.4"(900mm)	13.5"(345mm)	7.8"(200mm)	28.1"(715mm)	15.7"(400mm)	6.3"(160mm)	102.4"(2600mm)	110.2"(2800mm)	21.6"(550mm)
5SX32, 5AX32	23.6"(600mm)	100"(2540mm)	35.8"(910mm)	35.4"(900mm)	11.8"(300mm)	8.6"(220mm)	31.5"(800mm)	11.8"(300mm)	4.9"(125mm)	94.5"(2400mm)	102.4"(2600mm)	19.7"(500mm)
5SX34, 5AX34, 5BX34	23.6"(600mm)	97.6"(2480mm)	35.8"(910mm)	35.4"(900mm)	11.8"(300mm)	7.8"(200mm)	29.1"(740mm)	11.8"(300mm)	4.9"(125mm)	94.5"(2400mm)	102.4"(2600mm)	19.7"(500mm)
5SX40, 5AX40, 5BX40	27.1"(690mm)	100.4"(2550mm)	40.8"(1035mm)	35.4"(900mm)	13.5"(345mm)	7.8"(200mm)	28.1"(715mm)	15.7"(400mm)	6.3"(160mm)	102.4"(2600mm)	110.2"(2800mm)	21.6"(550mm)
5A40, 5B40	29.5"(750mm)	107.1"(2720mm)	43.7"(1110mm)	35.4"(900mm)	14.7"(375mm)	9.8"(250mm)	32.6"(830mm)	15.7"(400mm)	7.8"(200mm)	102.4"(2600mm)	110.2"(2800mm)	21.6"(550mm)
5A50, 5B50	29.1"(740mm)	108.3"(2750mm)	43.5"(1105mm)	35.4"(900mm)	14.5"(370mm)	9.8"(250mm)	32.6"(830mm)	15.7"(400mm)	7.8"(200mm)	102.4"(2600mm)	110.2"(2800mm)	21.6"(550mm)
6 Head Drills												
6SZ32, 6AZ32	23.6"(600mm)	89.6"(2275mm)	35.8"(910mm)	35.4"(900mm)	11.8"(300mm)	9.8"(250mm)	32.6"(830mm)	11.8"(300mm)	4.9"(125mm)	114"(2900mm)	122"(3100mm)	19.7"(500mm)
6SZ34, 6AZ34, 6BZ34	23.6"(600mm)	87.8"(2230mm)	35.8"(910mm)	35.4"(900mm)	11.8"(300mm)	7.8"(200mm)	29.1"(740mm)	11.8"(300mm)	4.9"(125mm)	114"(2900mm)	122"(3100mm)	19.7"(500mm)
6SZ40, 6AZ40, 6BZ40	27.1"(690mm)	88.6"(2230mm)	40.8"(1035mm)	35.4"(900mm)	13.5"(345mm)	7.8"(200mm)	28.1"(715mm)	15.7"(400mm)	6.3"(160mm)	124"(3150mm)	132"(3350mm)	21.6"(550mm)
6SX32, 6AX32	23.6"(600mm)	100"(2540mm)	35.8"(910mm)	35.4"(900mm)	11.8"(300mm)	8.6"(220mm)	31.5"(800mm)	11.8"(300mm)	4.9"(125mm)	114"(2900mm)	122"(3100mm)	19.7"(500mm)
6SX34, 6AX34, 6BX34	23.6"(600mm)	97.6"(2480mm)	35.8"(910mm)	35.4"(900mm)	11.8"(300mm)	7.8"(200mm)	29.1"(740mm)	11.8"(300mm)	4.9"(125mm)	114"(2900mm)	122"(3100mm)	19.7"(500mm)
6SX40, 6AX40, 6BX40	27.1"(690mm)	100.4"(2550mm)	40.8"(1035mm)	35.4"(900mm)	13.5"(345mm)	7.8"(200mm)	28.1"(715mm)	15.7"(400mm)	6.3"(160mm)	124"(3150mm)	132"(3350mm)	21.6"(550mm)
6A40, 6B40	29.5"(750mm)	107.1"(2720mm)	43.7"(1110mm)	35.4"(900mm)	14.7"(375mm)	9.8"(250mm)	32.6"(830mm)	15.7"(400mm)	7.8"(200mm)	124"(3150mm)	132"(3350mm)	21.6"(550mm)
6A50, 6B50	29.1"(740mm)	108.3"(2750mm)	43.5"(1105mm)	35.4"(900mm)	14.5"(370mm)	9.8"(250mm)	32.6"(830mm)	15.7"(400mm)	7.8"(200mm)	124"(3150mm)	132"(3350mm)	21.6"(550mm)

Clausing/Ibarmia Round Column Drill Optional Equipment

Model	Description:
7044	Coolant System with Separate Tank (all models)
7022	Work Light with Magnetic Base (all models)
PST	Cycle or Spindle turn START Foot Pedal
PSR	Spindle Reverse Foot Pedal (for tapping)
MCC-KT	Cross Slide Table 13.8" x 10.8" (K/T Series)
MCC-ZX	Cross Slide Table 15" x 8.7" (Z/X Series)
MCC-X40	Cross Slide Table 15" x 8.7" (X40 Series)
MB-5D	Cross Slide Table 16" x 12" (X Model A/B Series)

Series T	(Factory Installed Only)
MG-T	Rotating Table
PKA	Floor Cabinet with 2 Shelves
PKB	Floor Cabinet with Door and Drawer

Series Z	(Factory Installed Only)
MG-Z	Rotating Table
MGI-Z	Tilting Rotating Table
TAK-Z	Digital rpm Read-out (V Models only)
UC-Z	Union, Dragging Cone and Assembly for Multi-spindle Head

Series X	(Factory Installed Only)
MG-X	Rotating Table (X32 Models)
MGI-X	Tilting Rotating Table
RPF-X	Automatic Pitch Controlled Tapping with Single Speed Brake-motor
RPF-ANR-X	Automatic Pitch Controlled Tapping with Pneumatic Rapid Approach
HGP-X	Master Guide Spindle and Nut Set for Automatic Pitch Controlled Tapping
UC-X	Union, Dragging Cone and Assembly for Multi-spindle Head

Series A/B	(Factory Installed Only)
RPF-A	Automatic Pitch Controlled Tapping with Single Speed Brake-motor
RPF-ANR-A	Automatic Pitch Controlled Tapping with Pneumatic Rapid Approach
HGP-A	Master Guide Spindle and Nut Set for Automatic Pitch Controlled Tapping
ACNL-B	Pneumatic Counterbalance with Rapid Approach and Retreat
ACNL-S-B	Pneumatic Counterbalance with Rapid Approach and Retreat for Tube and Profile Drilling
ACNL-RPF-B	Pneumatic Counterbalance with Rapid Approach and Retreat with Controlled Tapping
AR-A	50% Lower Feed Rate Range
DLM-A	Mechanical Spotface Device
CN-A	Pneumatic Counterbalance for Spindle Return
UC-A	Union, Dragging Cone and Assembly for Multi-Spindle Head
GM-A	Multi-Spindle Head Guide Rod
PM-B	START/STOP and Emergency Stop Pendant Control
SC-B	8" Column Riser

Clausing Radial Drills

Models: CL720A

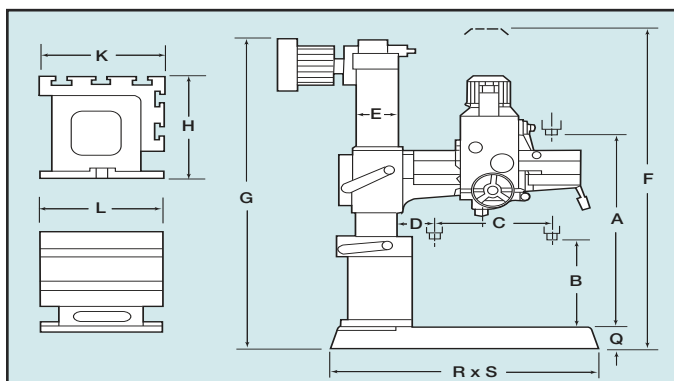
Features and Standard Equipment:

- Limit switch
- High speed gears are made of Nickel-Chrome Steel and are heat-treated and ground for durability
- Powerful 2 Hp spindle drive motor for heavy-duty cutting
- Extra auxiliary dial for spindle feed depth indication, allows review of spindle feed depth, .0394" to 7.874"
- Special spindle balance mechanism, superior to traditional balance mechanism and extends Balance Spring life
- Coolant system
- Low volt and overload protection
- 230/3/60 volt standard ● Tool kit and manuals

Specifications:



Dimensions:



Capacities:

Model	CL720A
Capacity:	
Drilling	
In Steel	1.26" (32mm)
In Cast Iron	2" (50mm)
Tapping	
In Steel	1" (25mm)
In Cast Iron	1.26" (32mm)
Boring	
In Steel	2.75" (70mm)
In Cast Iron	4.06" (105mm)

Model	CL720A
Working Area:	
Column Sleeve Dia. (E)	8.28" (210mm)
Column Face to Spindle Center	
Maximum (D+C)	29.5" (750mm)
Minimum (D)	8.7" (220mm)
Spindle Head Travel (C)	20.8" (530mm)
Base Surface to Spindle End	
Maximum (A)	41.7" (1060mm)
Minimum (B)	10.2" (260mm)
Arm Vertical Travel (A-B)	31.5" (800mm)
Arm Rotation (Right & Left)	180°
Baseplate Working Surface	35.5" x 25.3" (902x643mm)
Box Table Area	
Length (L)	23.6" (600mm)
Width (K)	17.5" (445mm)
Height (H)	15" (382mm)
Base Dimensions	
Floor Area (R x S)	49.6" x 25.2" (1260x640mm)
Height (Q)	6.5" (163mm)

Drill Head:	
Spindle Taper	4MT
Spindle Stroke	8.66" (220mm)
Quill Diameter	2.95" (75mm)
Number of Spindle Speeds	6
Spindle Speeds (rpm)	88, 154, 282, 455, 796, 1500
Number of Feeds	3
Spindle Feed Rate (in/rev.)	0.002"/0.0035"/0.006"
(mm/rev.)	.05mm/.09mm/.15mm
Spindle Drive Motor	2 hp (1.5 Kw)
Elevating Motor	1 hp (.75 Kw)
Coolant Pump Motor	1/8 hp (.10 Kw)

Dimensions and Weights:	
Max. Machine Height (F)	85.4" (2170mm)
Base and Column Height (G)	72.8" (1850mm)
Shipping Dim.	
Length	66.1" (1680mm)
Width	32.5" (826mm)
Height	85" (2160mm)
Net Weight	2,469 lbs. (1120kg)
Shipping Weight	2,756 lbs. (1250kg)



Clausing Radial Drills

Models: CL820A

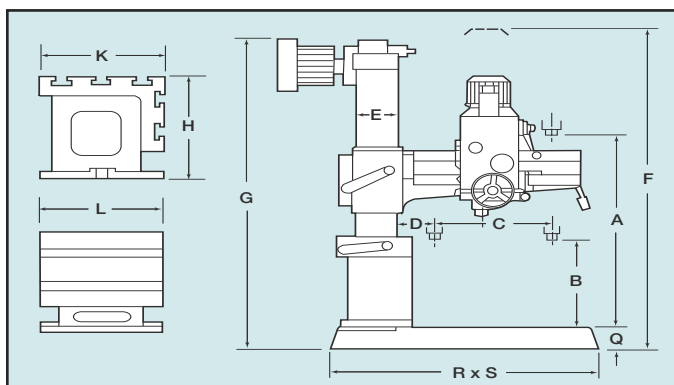
Features and Standard Equipment:

- Limit switch
- High speed gears are made of Nickel-Chrome Steel and are heat-treated and ground for durability
- Powerful 2 Hp spindle drive motor for heavy-duty cutting
- Extra auxiliary dial for spindle feed depth indication, allows review of spindle feed depth, .0394" to 7.874"
- Special spindle balance mechanism, superior to traditional balance mechanism and extends Balance Spring life
- Coolant system
- Low volt and overload protection
- 230/3/60 volt standard ● Tool kit and manuals

Specifications:

Model	CL820A
Working Area:	
Column Sleeve Dia. (E)	8.28" (210mm)
Column Face to Spindle Center	
Maximum (D+C)	33.5" (850mm)
Minimum (D)	8.7" (220mm)
Spindle Head Travel (C)	24.8" (630mm)
Base Surface to Spindle End	
Maximum (A)	47.6" (1270mm)
Minimum (B)	13.8" (350mm)
Arm Vertical Travel (A-B)	33.8" (858mm)
Arm Rotation (Right & Left)	180°
Baseplate Working Surface	35.5" x 25.3" (902x643mm)
Box Table Area	
Length (L)	23.6" (600mm)
Width (K)	17.5" (445mm)
Height (H)	15" (382mm)
Base Dimensions	
Floor Area (R x S)	49.6" x 25.2" (1260x640mm)
Height (Q)	6.5" (163mm)

Dimensions:



Drill Head:	
Spindle Taper	4MT
Spindle Stroke	8.66" (220mm)
Quill Diameter	2.95" (75mm)
Number of Spindle Speeds	6
Spindle Speeds (rpm)	88, 154, 282, 455, 796, 1500
Number of Feeds	3
Spindle Feed Rate (in/rev.)	0.002" 0.0035" 0.006" .05mm), (.09mm), (.15mm)
Spindle Drive Motor	2 hp (1.5 Kw)
Elevating Motor	1 hp (.75 Kw)
Coolant Pump Motor	1/8 hp (.10 Kw)

Capacities:

Model	CL820A
Capacity:	
Drilling	
In Steel	1.26" (32mm)
In Cast Iron	2" (50mm)
Tapping	
In Steel	1" (25mm)
In Cast Iron	1.26" (32mm)
Boring	
In Steel	2.75" (70mm)
In Cast Iron	4.06" (105mm)

Dimensions and Weights:	
Max. Machine Height (F)	91.3" (2170mm)
Base and Column Height (G)	79.1" (2010mm)
Shipping Dim.	
Length	66.1" (1680mm)
Width	32.5" (826mm)
Height	86.2" (2190mm)
Net Weight	2,645 lbs. (1200kg)
Shipping Weight	2,954 lbs. (1340kg)

Clausing Radial Drills

Models: CL920A

Features and Standard Equipment:

- Limit switch
- High speed gears are made of Nickel-Chrome Steel and are heat-treated and ground for durability
Powerful 2 Hp spindle drive motor for heavy-duty cutting
- Extra auxiliary dial for spindle feed depth indication, allows review of spindle feed depth, .0394" to 7.874"
- Special spindle balance mechanism, superior to traditional balance mechanism and extends Balance Spring life
- Coolant system
- Low volt and overload protection
- 230/3/60 volt standard ● Tool kit and manuals

Specifications:

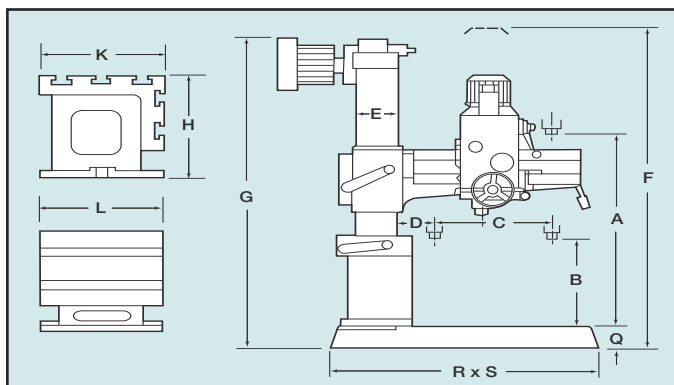
Model	CL920A
Working Area:	
Column Sleeve Dia. (E)	8.28" (210mm)
Column Face to Spindle Center Maximum (D+C)	37.4" (950mm)
Minimum (D)	8.7" (220mm)
Spindle Head Travel (C)	28.7" (730mm)
Base Surface to Spindle End Maximum (A)	47.6" (1210mm)
Minimum (B)	13.8" (350mm)
Arm Vertical Travel (A-B)	33.8" (858mm)
Arm Rotation (Right & Left)	180°
Baseplate Working Surface	35.5" x 25.3" (902x643mm)
Box Table Area Length (L)	23.6" (600mm)
Width (K)	17.5" (445mm)
Height (H)	15" (382mm)
Base Dimensions Floor Area (R x S)	49.6" x 25.2" (1260x640mm)
Height (Q)	6.5" (163mm)

Drill Head:	
Spindle Taper	4MT
Spindle Stroke	8.66" (220mm)
Quill Diameter	2.95" (75mm)
Number of Spindle Speeds	6
Spindle Speeds (rpm)	88, 154, 282, 455, 796, 1500
Number of Feeds	3
Spindle Feed Rate (in/rev.)	0.002"/0.0035"/0.006"
(mm/rev.)	.05mm/.09mm/.15mm
Spindle Drive Motor	2 hp (1.5 Kw)
Elevating Motor	1 hp (.75 Kw)
Coolant Pump Motor	1/8 hp (.10 Kw)

Dimensions and Weights:	
Max. Machine Height (F)	91.3" (2320mm)
Base and Column Height (G)	79.1" (2010mm)
Shipping Dim. Length	71.1" (1806mm)
Width	32.5" (826mm)
Height	86.2" (2190mm)
Net Weight	2,756 lbs. (1250kg)
Shipping Weight	3,086 lbs. (1400kg)



Dimensions:



Capacities:

Model	CL920A
Capacity:	
Drilling In Steel	1.26" (32mm)
In Cast Iron	2" (50mm)
Tapping In Steel	1" (25mm)
In Cast Iron	1.26" (32mm)
Boring In Steel	2.75" (70mm)
In Cast Iron	4.06" (105mm)



Clausing Radial Drills

Model: CL1100

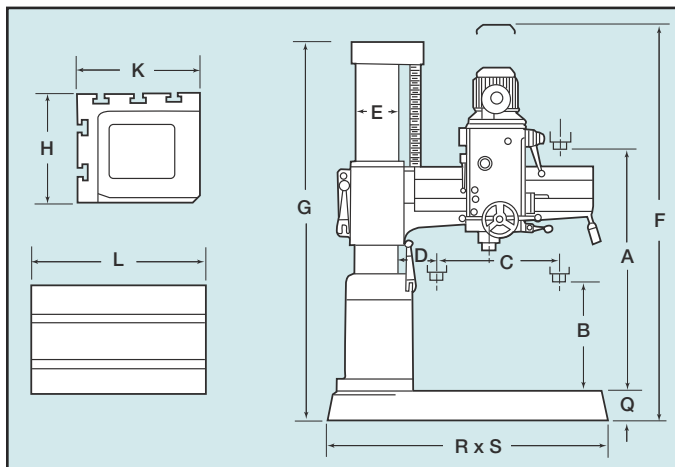
Features and Standard Equipment:

- High-quality cast-iron arm with heat-treated and ground slides for smooth and accurate head positioning
- The bearing bracket for gear-box is fitted with standard bearings to fit arm slide for smooth gear-box operation
- High speed gears are made of Nickel-Chrome Steel and are heat-treated and ground for durability
- Powerful 3 Hp, 2-speed, heavy-duty spindle drive motor
Overload protection device
- The main spindle is balanced by a specially shaped spring
Coolant system
- Low volt and overload protection
- Tool kit and manuals
- 230/3/60 volt standard or other voltages require optional transformer or special order

Specifications:

Model	CL1100
Working Area:	
Column Sleeve Dia. (E)	10.24" (260mm)
Column Face to spindle Center Maximum (D+C)	43.3" (1100mm)
Minimum (D)	11.0" (280mm)
Spindle Head Travel (C)	32.3" (820mm)
Base Surface to Spindle End Maximum (A)	50.0" (1270mm)
Minimum (B)	18.5" (470mm)
Arm Vertical Travel (A-B)	31.5" (800mm)
Arm Rotation (Right & Left)	180°
Baseplate Working Surface	48" x 29.1"(1219 x 739mm)
Box Table Area	
Length (L)	25.1" (640mm)
Width (K)	20.4" (520mm)
Height (H)	16.5" (420mm)
Base Dimensions	
Floor Area (R x S)	67.9" x 28.1"(1725 x 715mm)
Height (Q)	7.1"(180mm)

Dimensions:



Drill Head:

Spindle Taper	4MT
Spindle Stroke	9.05" (230mm)
Quill Diameter	3.15" (80mm)
Number of Spindle Speeds	12
Spindle Speeds (rpm)	44-1500
Number of Feeds	3
Spindle Feed Rate (in/mm)/rev.)	0.002"(.05mm), 0.0035"(.09mm), 0.006"(.15mm)
Spindle Drive Motor (2-speed)	3 hp (2.25 Kw)
Elevating Motor	1 hp (.75 Kw)
Coolant Pump Motor	1/8 hp (.10 Kw)

Capacities:

Model	CL1100
Capacity:	
Drilling	
In Steel	1.65" (42mm)
In Cast Iron	2.16" (55mm)
Tapping	
In Steel	1" (25mm)
In Cast Iron	1.5" (38mm)
Boring	
In Steel	3.35" (85mm)
In Cast Iron	4.72" (120mm)

Dimensions and Weights:

Max. Machine Height (F)	99.6" (2530mm)
Base and Column Height (G)	78.7" (2000mm)
Shipping Dim.	
Length	74.0" (1880mm)
Width	34.0" (864mm)
Height	87" (2210mm)
Net Weight	3,968 lbs. (1800kg)
Shipping Weight	4,299 lbs. (1950kg)

Clausing Radial Drills Model: CL1230H

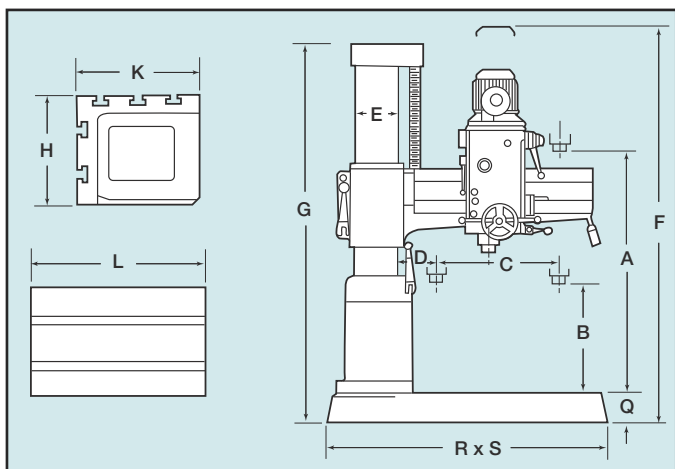
Features and Standard Equipment:

- High-quality cast-iron arm with heat-treated and ground slides for smooth and accurate head positioning
- The bearing bracket for gear-box is fitted with standard bearings to fit arm slide for smooth gear-box operation
- High speed gears are made of Nickel-Chrome Steel and are heat-treated and ground for durability
- Powerful 3 Hp, 2-speed, heavy-duty spindle drive motor
- Overload protection device
- The main spindle is balanced by an adjustable block
- Coolant system
- Low volt and overload protection
- Equipped with hydraulic clamping. With a push of a button you can have arm unclamped then move vertically, or stop then clamp automatically
- Tool kit and manuals
- 230/3/60 volt standard or other voltages require optional transformer or special order

Specifications:



Dimensions:



Model	CL1230H
Working Area:	
Column Sleeve Dia. (E)	11.81" (300mm)
Column Face to Spindle Center Maximum (D+C)	46.1" (1170mm)
Minimum (D)	13.4" (340mm)
Spindle Head Travel (C)	35.0" (890mm)
Base Surface to Spindle End Maximum (A)	53.9" (1370mm)
Minimum (B)	19.3" (490mm)
Arm Vertical Travel (A-B)	34.6" (880mm)
Arm Rotation (Right & Left)	180°
Baseplate Working Surface	48" x 29.1"(1219 x 739mm)
Box Table Area	
Length (L)	25.1" (640mm)
Width (K)	20.4" (520mm)
Height (H)	16.5" (420mm)
Base Dimensions	
Floor Area (R x S)	67.9" x 28.1"(1725 x 715mm)
Height (Q)	7.1" (180mm)

Drill Head:	
Spindle Taper	4MT
Spindle Stroke	9.84" (250mm)
Quill Diameter	3.15" (80mm)
Number of Spindle Speeds	2
Spindle Speeds (rpm)	44-1500
Number of Feeds	3
Spindle Feed Rate (in(mm)/rev.)	0.002"(.05mm), 0.0035"(.09mm), 0.006"(.15mm)
Spindle Drive Motor (2-speed)	3 hp (2.25 Kw)
Elevating Motor	1 hp (.75 Kw)
Clamping Motor	1 hp (.75 Kw)
Coolant Pump Motor	1/8 hp (.10 Kw)

Capacities:

Model	CL1230H
Capacity:	
Drilling	
In Steel	1.65" (42mm)
In Cast Iron	2.16" (55mm)
Tapping	
In Steel	1" (25mm)
In Cast Iron	1.38" (38mm)
Boring	
In Steel	3.38" (86mm)
In Cast Iron	4.72" (120mm)

Dimensions and Weight:	
Max. Machine Height (F)	109.5" (2780mm)
Base and Column Height (G)	81.1" (2060mm)
Shipping Dim.	
Length	80.1" (2035mm)
Width	32.5" (862mm)
Height	88.2" (2240mm)
Net Weight	4,630 lbs. (2100kg)
Shipping Weight	5,071 lbs. (2300kg)



Shown with Optional Tilt Table

Clausing Radial Drills Model: CLC1250H

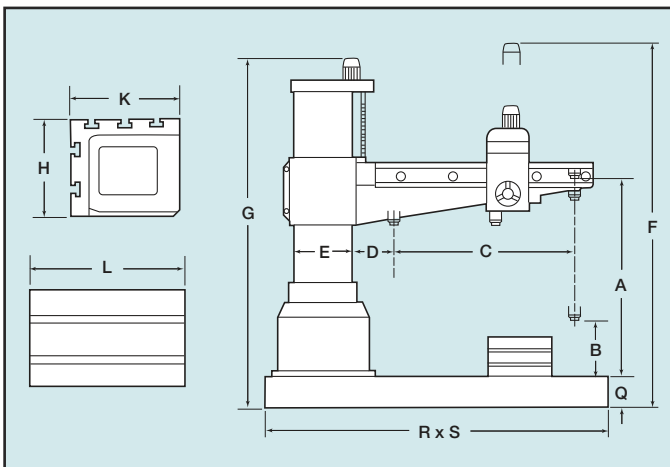
Features and Standard Equipment:

- Equipped with hydraulic separate clamping unit. Vertical movement of arm is coordinated by an IC timer. With a single touch on push button switch, you can have the arm unclamped then move vertically, or stop then clamp automatically. Very easy to operate, and tools will always stay at the same point after tool shifting
- Gears in gear box are cooled by oil cycled by an oil pump to minimize gear wear
- Powerful 5 Hp, 2-speed, heavy-duty spindle drive motor
- Friction type disc clutch absorbs impact force caused by vertical movement of spindle, and protects all transmission units inside gear box. With quick spindle return, the clutch will help speed-up the tapping operation
- Special arm elevating device is provided to prevent arm from falling down abruptly after years of usage
- Coolant system ● Tool kit and manuals
- 230/3/60 volt standard or other voltages require optional transformer or special order

Specifications:

Model	CLC1250H
Working Area:	
Column Sleeve Dia. (E)	11.81" (300mm)
Column Face to Spindle Center	
Maximum (D+C)	49.21" (1250mm)
Minimum (D)	14.17" (360mm)
Spindle Head Travel (C)	35.04" (890mm)
Base Surface to Spindle End	
Maximum (A)	52.95" (1345mm)
Minimum (B)	17.36" (441mm)
Arm Vertical Travel (A-B)	28.1" (715mm)
Arm Rotation (Right & Left)	180°
Baseplate Working Surface	48" x 29.1"(1219 x 739mm)
Box Table Area	
Length (L)	25.1" (640mm)
Width (K)	20.4" (520mm)
Height (H)	16.5" (420mm)
Base Dimensions	
Floor Area (R x S)	70.3" x 30.9"(1785 x 785mm)
Height (Q)	7.8" (190mm)

Dimensions:



Drill Head:

Spindle Taper	5MT
Spindle Stroke	10.63" (270mm)
Quill Diameter	3.15" (80mm)
Number of Spindle Speeds	12
Spindle Speeds (rpm)	56-1450
Number of Feeds	3
Spindle Feed Rate (in/mm)/rev.)	0.0023"(.06mm), 0.004"(.10mm), 0.008"(.20mm)
Spindle Drive Motor (2-speed)	5 hp (3.8 Kw)
Elevating Motor	1 hp (.75 Kw)
Clamping Motor	1 hp (.75 Kw)
Coolant Pump Motor	1/8 hp (.10 Kw)

Capacities:

Model	CLC1250H
Capacity:	
Drilling	
In Steel	1.97" (50mm)
In Cast Iron	2.36" (60mm)
Tapping	
In Steel	1.57" (40mm)
In Cast Iron	1.97" (50mm)
Boring	
In Steel	4.33" (110mm)
In Cast Iron	6.55" (165mm)

Dimensions and Weight:

Max. Machine Height (F)	104.1" (2645mm)
Base and Column Height (G)	81.9" (2080mm)
Shipping Dim.	
Length	81.1" (2060mm)
Width	39.2" (995mm)
Height	88.2" (2240mm)
Net Weight	5,071 lbs. (2300kg)
Shipping Weight	5,512 lbs. (2500kg)

Clausing Radial Drills

Model: CLC1600H

Features and Standard Equipment:

- Equipped with hydraulic separate clamping unit. Vertical movement of arm is coordinated by an IC timer. With a single touch on push button switch, you can have the arm unclamped then move vertically, or stop then clamp automatically. Very easy to operate, and tools will always stay at the same point after tool shifting
- Gears in gear box are cooled by oil cycled by an oil pump to minimize gear wear
- Powerful 5 Hp, 2-speed, heavy-duty spindle drive motor
- Friction type disc clutch absorbs impact force caused by vertical movement of spindle, and protects all transmission units inside gear box. With quick spindle return, the clutch will help speed-up the tapping operation
- Special arm elevating device is provided to prevent arm from falling down abruptly after years of usage
- Coolant system ● Tool kit and manuals
- 230/3/60 volt standard or other voltages require optional transformer or special order

Specifications:

Model	CLC1600H
Working Area:	
Column Sleeve Dia. (E)	12.61" (320mm)
Column Face to Spindle Center	
Maximum (D+C)	63.00" (1600mm)
Minimum (D)	13.78" (350mm)
Spindle Head Travel (C)	49.21" (1250mm)
Base Surface to Spindle End	
Maximum (A)	55.90" (1420mm)
Minimum (B)	18.31" (465mm)
Arm Vertical Travel (A-B)	36.7" (932mm)
Arm Rotation (Right & Left)	180°
Baseplate Working Surface	70.9" x 40.4"(1800 x 1026mm)
Box Table Area	
Length (L)	24.8" (630mm)
Width (K)	19.7" (500mm)
Height (H)	19.7" (500mm)
Base Dimensions	
Floor Area (R x S)	100.4" x 38.2"(2550 x 970mm)
Height (Q)	7.9" (200mm)

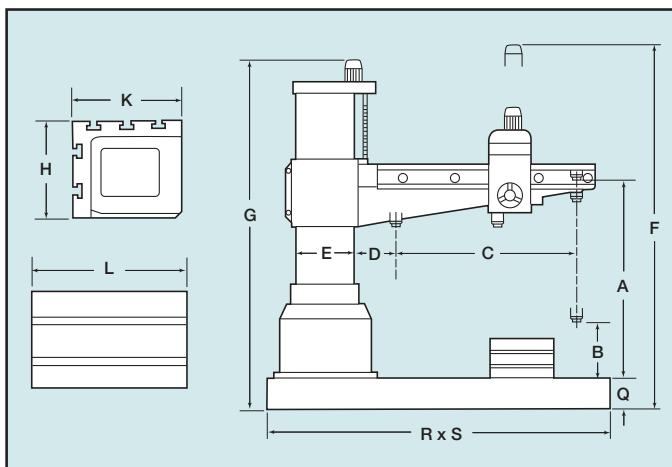
Drill Head:	
Spindle Taper	5MT
Spindle Stroke	10.63" (270mm)
Quill Diameter	3.15" (80mm)
Number of Spindle Speeds	12
Spindle Speeds (rpm)	56-1450
Number of Feeds	3
Spindle Feed Rate (in/mm)/rev.)	0.0023"(.06mm), 0.004"(.10mm), 0.008"(.20mm)
Spindle Drive Motor (2-speed)	5 hp (3.8 Kw)
Elevating Motor	1 hp (.75 Kw)
Clamping Motor	1 hp (.75 Kw)
Coolant Pump Motor	1/8 hp (.10 Kw)

Dimensions and Weight:	
Max. Machine Height (F)	108.7" (2760mm)
Base and Column Height (G)	86.1" (2186mm)
Shipping Dim.	
Length	105.2" (2670mm)
Width	44.1" (1120mm)
Height	94.9" (2410mm)
Net Weight	7,275 lbs. (3300kg)
Shipping Weight	8,378 lbs. (2800kg)



Shown with Optional Tilt Table

Dimensions:



Capacities:

Model	CLC1600H
Capacity:	
Drilling	
In Steel	1.97" (50mm)
In Cast Iron	2.36" (60mm)
Tapping	
In Steel	1.57" (40mm)
In Cast Iron	1.97" (50mm)
Boring	
In Steel	4.33" (110mm)
In Cast Iron	6.55" (165mm)



Clausing Radial Drills

Model: CL1600H

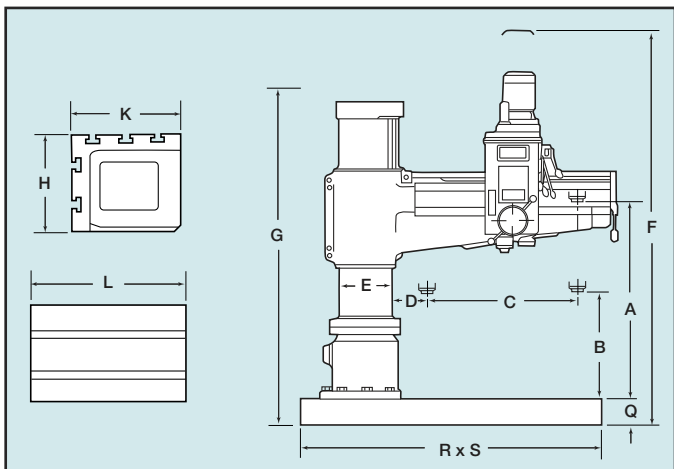
Features and Standard Equipment:

- Equipped with hydraulic separate clamping unit. Vertical movement of arm is coordinated by an IC timer. With a single touch on push button switch, you can have the arm unclamped then move vertically, or stop then clamp automatically. Very easy to operate, and tools will always stay at the same point after tool shifting.
- Gears in gear box are cooled by oil cycled by an oil pump to minimize gear wear.
- Friction type disc clutch absorbs impact force caused by vertical movement of spindle, and protects all transmission units inside gear box. With quick spindle return, the clutch will help speed-up the tapping operation.
- Special automatic tool eject device is supplied to allow you to change tools quickly. (No drifter is required) Special arm elevating device is provided to prevent arm from falling down abruptly after.
- Coolant system ● Tool kit and manuals
- 230/3/60 volt standard

Specifications:

Model	CL1600H
Working Area:	
Column Sleeve Dia. (E)	17" (432mm)
Column Face to Spindle Center	
Maximum (D+C)	62.2" (1580mm)
Minimum (D)	17.3" (440mm)
Spindle Head Travel (C)	44.9" (1140mm)
Base Surface to Spindle End	
Maximum (A)	63" (1600mm)
Minimum (B)	15" (380mm)
Arm Vertical Travel (A-B)	48" (1220mm)
Arm Rotation (Right & Left)	180°
Baseplate Working Surface	70.9" x 40.4" (1800 x 1026mm)
Box Table Area	
Length (L)	27.6" (700mm)
Width (K)	19.7" (500mm)
Height (H)	15.9" (405mm)
Base Dimensions	
Floor Area (R x S)	97.6" x 41.3" (2480 x 1050mm)
Height (Q)	8.26" (210mm)
Drill Head:	
Spindle Taper	5MT
Spindle Stroke	14.6" (370mm)
Quill Diameter	3.94" (100mm)
Number of Spindle Speeds	12
Spindle Speeds (rpm)	40-1920
Number of Steps	6
Spindle Feed Rate (in(mm)/rev.)	0.003"(.07mm)-0.038"(.96mm)
Spindle Drive Motor (1-speed)	7.5 hp (5.6 Kw)
Elevating Motor	2 hp (1.5 Kw)
Clamping Motor	1 hp (.75 Kw)
Coolant Pump Motor	1/8 hp (.10 Kw)
Dimensions and Weight	
Max. Machine Height (F)	124.8" (3170mm)
Base and Column Height (G)	107.7" (2660mm)
Shipping Dim.	
Length	112.2" (2850mm)
Width	55.1" (1400mm)
Height	115.7" (2940mm)
Net Weight	10,805 lbs. (4900kg)
Shipping Weight	11,245 lbs. (5100kg)

Dimensions:



Capacities:

Model	CL1600H
Capacity:	
Drilling	
In Steel	2.6" (65mm)
In Cast Iron	2.75" (70mm)
Tapping	
In Steel	1.97" (50mm)
In Cast Iron	2.36" (60mm)
Boring	
In Steel	5" (126mm)
In Cast Iron	7.28" (185mm)

Clausing Radial Drills

Model: CL2000H

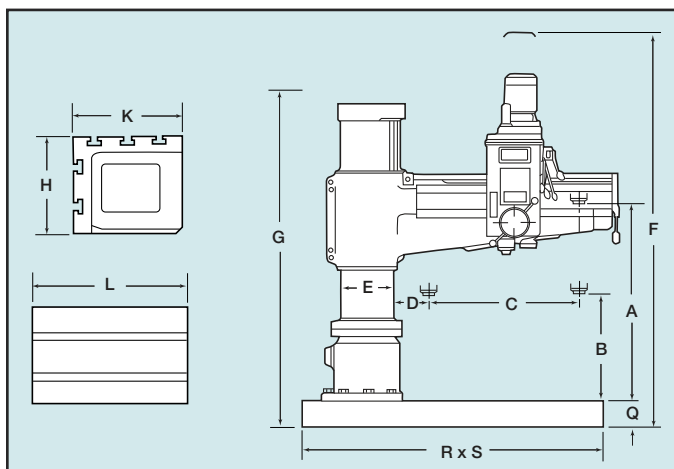
Features and Standard Equipment:

- Equipped with hydraulic separate clamping unit. Vertical movement of arm is coordinated by an IC timer. With a single touch on push button switch, you can have the arm unclamped then move vertically, or stop then clamp automatically. Very easy to operate, and tools will always stay at the same point after tool shifting. Gears in gear box are cooled by oil cycled by an oil pump to minimize gear wear.
- Friction type disc clutch absorbs impact force caused by vertical movement of spindle, and protects all transmission units inside gear box. With quick spindle return, the clutch will help speed-up the tapping operation.
- Special arm elevating device is provided to prevent arm from falling down abruptly after years of usage.
- Coolant system
- Tool kit and manuals
- 230/3/60 volt standard

Specifications:



Dimensions:



Capacities:

Model	CL2000H
Capacity:	
Drilling	
In Steel	2.6" (65mm)
In Cast Iron	2.75" (70mm)
Tapping	
In Steel	1.97" (50mm)
In Cast Iron	2.36" (60mm)
Boring	
In Steel	5" (126mm)
In Cast Iron	7.28" (185mm)

Model	CL2000H
Working Area:	
Column Sleeve Dia. (E)	17" (432mm)
Column Face to Spindle Center	
Maximum (D+C)	78.7" (2000mm)
Minimum (D)	19.3" (490mm)
Spindle Head Travel (C)	59.4" (1510mm)
Base Surface to Spindle End	
Maximum (A)	74.8" (1900mm)
Minimum (B)	19.7" (500mm)
Arm Vertical Travel (A-B)	55.1" (1400mm)
Arm Rotation (Right & Left)	180°
Baseplate Working Surface	
Box Table Area	
Length (L)	39.3" (1000mm)
Width (K)	31.5" (800mm)
Height (H)	19.7" (500mm)
Base Dimensions	
Floor Area (R x S)	114.5" x 43.3" (2908 x 1102mm)
Height (Q)	98.4" (2500mm)
Drill Head:	
Spindle Taper	5MT
Spindle Stroke	14.6" (370mm)
Quill Diameter	3.94" (100mm)
Number of Spindle Speeds	12
Spindle Speeds (rpm)	35-1890
Number of Steps	6
Spindle Feed Rate (in/mm/rev.)	0.003"(.07mm)-0.038"(.96mm)
Spindle Drive Motor (1-speed)	7.5 hp (5.6 Kw)
Elevating Motor	3 hp (2.25 Kw)
Clamping Motor	1 hp (.75 Kw)
Coolant Pump Motor	1/8 hp (.10 Kw)
Dimensions and Weight	
Max. Machine Height (F)	124.8" (3470mm)
Base and Column Height (G)	116.5" (2960mm)
Shipping Dim.	
Length	122.2" (3105mm)
Width	55.1" (1400mm)
Height	127.5" (3240mm)
Net Weight	13,448 lbs. (6100kg)
Shipping Weight	14,550 lbs. (6600kg)



Clausing Radial Drills Model: CLC2500

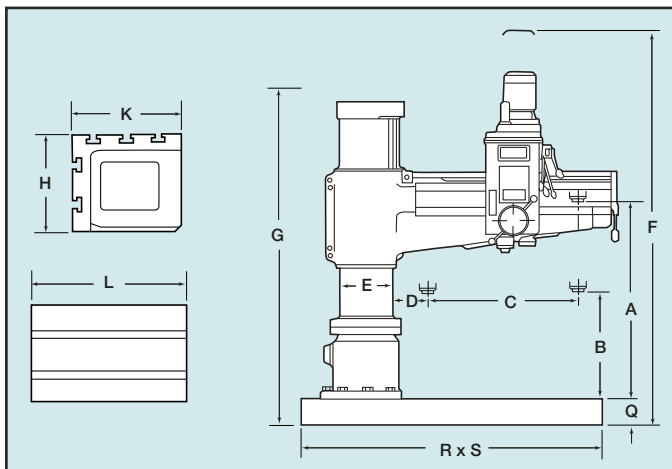
Features and Standard Equipment:

- Equipped with hydraulic separate clamping unit. Vertical movement of arm is coordinated by an IC timer. With a single touch on push button switch, you can have the arm unclamped then move vertically, or stop then clamp automatically. Very easy to operate, and tools will always stay at the same point after tool shifting
- Gears in gear box are cooled by oil cycled by an oil pump to minimize gear wear
- Friction type disc clutch absorbs impact force caused by vertical movement of spindle, and protects all transmission units inside gear box. With quick spindle return, the clutch will help speed-up the tapping operation
- Special arm elevating device is provided to prevent arm from falling down abruptly after years of usage
- Coolant system
- Tool kit and manuals
- 230/3/60 volt standard

Specifications:

Model	CLC2500
Working Area:	
Column Sleeve Dia. (E)	21.65" (550mm)
Column Face to Spindle Center Maximum (D+C)	98.4" (2500mm)
Minimum (D)	19.7" (500mm)
Spindle Head Travel (C)	78.7" (2000mm)
Base Surface to Spindle End Maximum (A)	78.7" (2000mm)
Minimum (B)	21.6" (550mm)
Arm Vertical Travel (A-B)	57.1" (1450mm)
Arm Rotation (Right & Left)	180°
Baseplate Working Surface Box Table Area	86.8" x 43.4" (2205 x 1102mm)
Length (L)	39.4" (1000mm)
Width (K)	31.5" (800mm)
Height (H)	22" (560mm)
Base Dimensions Floor Area (R x S)	138.6" x 55.1" (3520 x 1400mm)
Height (Q)	12.6" (320mm)
Drill Head:	
Spindle Taper	6MT
Spindle Stroke	17.7" (450mm)
Quill Diameter	3.94" (100mm)
Number of Spindle Speeds	16
Spindle Speeds (rpm)	16-1250
Number of Steps	16
Spindle Feed Rate (in/mm)/rev.)	0.0015"(.04mm)-0.126"(3.20mm)
Spindle Drive Motor (1-speed)	10 hp (7.5 Kw)
Elevating Motor	5 hp (3.6 Kw)
Coolant Pump Motor	1/4 hp (.18 Kw)
Dimensions and Weight:	
Max. Machine Height (F)	157" (3990mm)
Base and Column Height (G)	151.6" (2660mm)
Shipping Dim. Length	158" (4000mm)
Width	63" (1600mm)
Height	151.6" (3850mm)
Net Weight	24,250 lbs. (11000kg)
Shipping Weight	27,557 lbs. (12500kg)

Dimensions:



Capacities:

Model	CLC2500
Capacity:	
Drilling In Steel	3.15" (80mm)
In Cast Iron	3.98" (100mm)
Tapping In Steel	2.56" (65mm)
In Cast Iron	2.95" (75mm)
Boring In Steel	6" (150mm)
In Cast Iron	10" (250mm)