



Clausing Precision Manual Surface Grinders

Precision Manual Surface Grinders with Table Sizes: 6" x 18" & 8" x 18"

Standard Features...

- High precision cartridge spindle
- Anti-wear guide ways coated with "TURCITE-B"
- Enlarged column and base create high stability & rigidity
- Automatic lube system to lubricate lead-screws and guideways for greater longevity
- Timing belt table drive which has enclosed high tensile steel cores that ensure smoother table movement and longevity
- Heavy-duty cast iron construction
- 230/3/60v or 460/3/60v standard other voltages may require transformer or special order

Specifications:

Model	CSG618H	CSG818H
Table Size	6" x 18" (152 x 457mm)	8" x 18" (203 x 457mm)
Max. Grinding Length (Longitudinal)	18.9" (480mm)	18.9" (480mm)
Max. Grinding Width (Crosswise)	7" (178mm)	8.9" (228mm)
Max. Distance from Table Surface to Spindle Centerline	18" (450mm)	18" (450mm)
Standard Magnetic Chuck Size	6" x 18" (150 x 450mm)	8" x 18" (200 x 460mm)
Longitudinal Movement of Table		
Max. Travel (Manual)	20" (510mm)	20" (510mm)
Crossfeed Transverse Travel		
Max. Manual Transverse Travel	7.68" (195mm)	9.84" (250mm)
Handwheel Per Revolution	0.2" (5mm)	0.2" (5mm)
Handwheel Per Graduation	0.0005" (.0127mm)	0.0005" (.0127mm)
Wheelhead Vertical Downfeed		
Handwheel Per Revolution	.05" (1mm)	.05" (1mm)
Handwheel Per Graduation	.0002" (.005mm)	.0002" (.005mm)
Grinding Spindle Drive		
Speed (rpm)	3450	3450
Power rating	2 hp (1.5kw)	2 hp (1.5kw)
Standard Grinding Wheel		
Diameter	8" (203mm)	8" (203mm)
Width	.5" - .75" (13-19mm)	.5" - .75" (13-19mm)
Bore	1.25" (31.75mm)	1.25" (31.75mm)
Total Space Required (L x W x H)	71.3" x 44.6" x 65.4" (1810 x 1133 x 1660mm)	71.3" x 50.6" x 66.1" (1810 x 1285 x 1680mm)
Weight		
Net Weight	1,587 lbs. (720kg)	2,332 lbs. (1060kg)
Gross Weight	1,873 lbs. (850kg)	2,662 lbs. (1210kg)
Rated Power, Approx.	2 hp (1.5kw)	2 hp (1.5kw)
Packing Dimensions (L x W x H)	51" x 45" x 76" (1300 x 1140 x 1930mm)	76.4" x 55" x 76" (1940 x 1400 x 1930mm)

Manual Handfeed on X, Y and Z axis. *Design and specifications are subject to change without notice.*

GRINDING



Clausing Precision Hydraulic Surface Grinders

Specifications:

Model	CSG2A618	CSG3A618	CSG2A818
Table Size	6" x 18" (152 x 460mm)	6" x 18" (152 x 460mm)	8" x 18" (203 x 460mm)
Max. Grinding Length (Longitudinal)	18.9" (480mm)	18.9" (480mm)	18.9" (480mm)
Max. Grinding Width (Crosswise)	7" (178mm)	7" (178mm)	8.9" (228mm)
Max. Distance from Table Surface to Spindle Centerline (Standard Column) (Optional Column)	18" (460mm) -	18" (460mm) -	18" (460mm) -
Standard Magnetic Chuck Size	6" x 18" (150 x 450mm)	6" x 18" (150 x 450mm)	8" x 18" (200 x 450mm)
Longitudinal Movement of Table			
Max. Travel (Hydraulic)	18.9" (480mm)	18.9" (480mm)	18.9" (480mm)
Max. Travel (Manual)	20" (510mm)	20" (510mm)	20" (510mm)
Table Speed Infinitely Variable	196"-1102"/min (5-28m/min)	196"-1102"/min (5-28m/min)	196"-984"/min. (5-25m/min.)
Crossfeed Transverse Travel			
Auto Transverse Increment	.04" - .4" (1-10mm)	.04" - .4" (1-10mm)	.04" - .4" (1-10mm)
Max. Auto Transverse Travel	7" (180mm)	7" (180mm)	9.25" (235mm)
Max. Manual Transverse Travel	7.68" (195mm)	7.68" (195mm)	9.84" (250mm)
Handwheel Per Revolution	0.2" (5mm)	0.2" (5mm)	0.2" (5mm)
Handwheel Per Graduation	0.0005" (.0127mm)	0.0005" (.0127mm)	0.0005" (.0127mm)
Wheelhead Vertical Downfeed			
Rapid Travel Approx.	-	10" (250mm)/min	-
Handwheel Per Revolution	.05" (1mm)	.05" (1mm)	.05" (1mm)
Handwheel Per Graduation	.0001" (.0025mm)	.0001" (.0025mm)	.0001" (.0025mm)
Grinding Spindle Drive			
Speed (rpm)	3450	3450	3450
Power Rating	2 hp (1.5kw)	2 hp (1.5kw)	2 hp (1.5kw)
Standard Grinding Wheel			
Diameter	8" (203mm)	8" (203mm)	8" (203mm)
Width	.5" - .75" (13-19mm)	.5" - .75" (13-19mm)	.5" - .75" (13-19mm)
Bore	1.25" (31.75mm)	1.25" (31.75mm)	1.25" (31.75mm)
Hydraulic Motor (Power Rating)	1 hp x 6P	1 hp x 6P	1 hp x 6P
Crossfeed Motor (Power Rating)	40W x 6P	40W x 6P	40W x 6P
Elevating Motor (Power Rating)	-	40W x 4P	-
Total Space Required (L x W x H)	71.3" x 44.6" x 65.4" (1810 x 1133 x 1660mm)	71.3" x 44.6" x 65.4" (1810 x 1133 x 1660mm)	71.3" x 50.6" x 66.1" (1810 x 1285 x 1680mm)
Weight			
Net Weight	1,808 lbs. (820kg)	1,874 lbs. (850kg)	2,579 lbs. (1170kg)
Gross Weight	2,138 lbs. (970kg)	2,204 lbs. (1000kg)	2,954 lbs. (1340kg)
Rated Power, Approx.	3 hp (2.3kw)	3 hp (2.3kw)	3 hp (2.3kw)
Packing Dimensions	78" x 56" x 76" (1980 x 1420 x 1930mm)	78" x 56" x 76" (1980 x 1420 x 1930mm)	75" x 64" x 76" (1890 x 1630 x 1930mm)

Standard Features...

- 2A hydraulic longitudinal feed, motor drive cross feed
- 3A same as 2A plus motorized rapid up/down
- High precision cartridge spindle
- Anti-wear guide ways coated with "TURCITE-B"
- Enlarged column and base create high stability & rigidity
- Automatic lube system to lubricate lead-screws and guideways for greater longevity
- Timing belt table drive which has enclosed high tensile steel cores that ensure smoother table movement and longevity
- Rigid cast iron construction
- Micro down feed standard on 2A & 3A 1020 to 2040 machines
- 230/3/60v or 460/3/60v standard other voltages may require transformer or special order

Design and specifications are subject to change without notice.

2A: Longitudinal Hydraulics and Motorized Crossfeed

3A: Longitudinal Hydraulics, Motorized Crossfeed and Motorized Rapid Up/Down

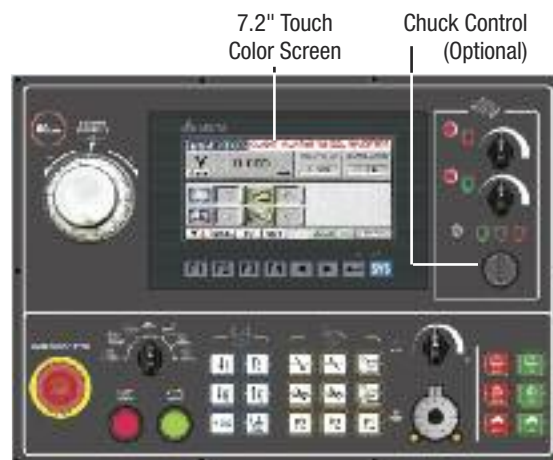
	CSG3A818	CSG2A1020	CSG3A1020	CSG2A1224	CSG3A1224	CSG3A1228	CSG3A1236	CSG3A1632	CSG3A1640
	8" x 18" (203 x 460mm)	10" x 20" (254 x 508mm)	10" x 20" (254 x 508mm)	11.81" x 23.62" (300 x 600mm)	11.81" x 23.62" (300 x 600mm)	12" x 28" (305 x 712mm)	12" x 36" (305 x 915mm)	16" x 32" (406 x 813mm)	16" x 40" (406 x 1020mm)
	19" (480mm)	20.47" (520mm)	20.47" (520mm)	23.6" (600mm)	23.62" (520mm)	23.6" (600mm)	36" (915mm)	32" (813mm)	40" (1020mm)
	9" (228mm)	11" (280mm)	11" (280mm)	11.81" (300mm)	11.81" (300mm)	13" (330mm)	13" (330mm)	16" (410mm)	16" (410mm)
	18" (460mm) -	19.68" (500mm) 23.62" (600mm)	19.68" (500mm) 23.62" (600mm)	23" (585mm) -	23" (585mm) -	24.8" (630mm) 28.35" (720mm)	24.8" (630mm) 28.35" (720mm)	24.8" (630mm) 28.35" (720mm)	24.8" (630mm) 28.35" (720mm)
	8" x 18" (200 x 450mm)	10" x 20" (250 x 500mm)	10" x 20" (250 x 500mm)	11.81" x 23.63" (300 x 600mm)	11.81" x 23.63" (300 x 600mm)	11.81" x 27.56" (300 x 700mm)	11.81" x 35.43" (300 x 900mm)	15.75" x 31.5" (400 x 800mm)	15.75" x 39.37" (400 x 1000mm)
	19" (480mm)	22.83" (580mm)	22.83" (580mm)	25.59" (650mm)	25.59" (650mm)	30" (760mm)	37.8" (960mm)	35" (890mm)	41.73" (1060mm)
	20" (510mm)	24.41" (620mm)	24.41" (620mm)	28.74" (730mm)	28.74" (730mm)	32.68" (830mm)	39.37" (1000mm)	36.61" (930mm)	43.31" (1100mm)
	196"-984"/min. (5-25m/min.)	196"-984"/min. (5-25m/min.)	196"-984"/min. (5-25m/min.)	196"-984"/min. (5-25m/min.)	196"-984"/min. (5-25m/min.)	196"-984"/min. (5-25m/min.)	196"-984"/min. (5-25m/min.)	196"-984"/min. (5-25m/min.)	196"-984"/min. (5-25m/min.)
	.04" - .4" (1-10mm)	.04" - .5" (1-13mm)	.04" - .5" (1-13mm)	.04" - .75" (1-19mm)	.04" - .75" (1-19mm)	.04 - 1" (1-25mm)	.04 - 1" (1-25mm)	.04 - 1" (1-25mm)	.04 - 1" (1-25mm)
	9.25" (235mm)	10.63" (270mm)	10.63" (270mm)	12.2" (310mm)	12.2" (310mm)	13.78" (350mm)	13.78" (350mm)	17" (430mm)	17" (430mm)
	9.84" (250mm)	11.81" (300mm)	11.81" (300mm)	13.39" (340mm)	13.39" (340mm)	15" (380mm)	15" (380mm)	18" (460mm)	18" (460mm)
	0.2" (5mm)	0.2" (5mm)	0.2" (5mm)	0.2" (5mm)	0.2" (5mm)	0.2" (5mm)	0.2" (5mm)	0.2" (5mm)	0.2" (5mm)
	0.0005" (.0127mm)	0.001" (.025mm)	0.001" (.025mm)	0.001" (.025mm)	0.001" (.025mm)	0.001" (.025mm)	0.001" (.025mm)	0.001" (.025mm)	0.001" (.025mm)
	10" (250mm)/min	-	6" (150mm)/min	-	6" (150mm)/min	6" (150mm)/min	6" (150mm)/min	6" (150mm)/min	6" (150mm)/min
	.05 (1mm)	.04" (1mm)	.04" (1mm)	.04" (1mm)	.04" (1mm)	.04" (1mm)	.04" (1mm)	.04" (1mm)	.04" (1mm)
	.0001" (.0025mm)	.0005" (.0127mm)	.0005" (.0127mm)	.0005" (.0127mm)	.0005" (.0127mm)	.0005" (.0127mm)	.0005" (.0127mm)	.0005" (.0127mm)	.0005" (.0127mm)
	3450	3450	3450	1750	1750	1750	1750	1750	1750
	2 hp	3 hp	3 hp	5 hp	5 hp	7.5 hp	7.5 hp	7.5 hp	7.5 hp
	8" (203mm)	8" (203mm)	8" (203mm)	12" (304mm)	12" (304mm)	14" (355mm)	14" (355mm)	14" (355mm)	14" (355mm)
	.5" - .75" (13-19mm)	.75" - 1" (19-25mm)	.75" - 1" (19-25mm)	1.25" (31.75mm)	1.25" (31.75mm)	2" (50mm)	2" (50mm)	2" (50mm)	2" (50mm)
	1.25" (31.75mm)	1.25" (31.75mm)	1.25" (31.75mm)	3" (76.2mm)	3" (76.2mm)	5" (127mm)	5" (127mm)	5" (127mm)	5" (127mm)
	1 hp x 6P	2 hp x 6P	2 hp x 6P	2 hp x 6P	2 hp x 6P	3 hp x 6P	3 hp x 6P	3 hp x 6P	3 hp x 6P
	40W x 6P	80W x 6P	80W x 6P	80W x 6P	80W x 6P	80W x 6P	80W x 6P	80W x 6P	80W x 6P
	40W x 4P	-	80W x 6	-	80W x 6P	1/4 hp x 6P	1/4 hp x 6P	1/4 hp x 6P	1/4 hp x 6P
	71" x 50.6" x 66" (1810 x 1285 x 1680mm)	94.5" x 57" x 68.9" (2400 x 1450 x 1750mm)	94.5" x 57.5" x 68.9" (2400 x 1450 x 1750mm)	106.3" x 63" x 73" (2700 x 1600 x 1850mm)	106.3" x 63" x 73" (2700 x 1600 x 1850mm)	116" x 78" x 81" (2950 x 1970 x 2050mm)	140" x 78" x 81" (3550 x 1970 x 2050mm)	130" x 87" x 81" (3290 x 2200 x 2050mm)	158" x 87" x 81" (4020 x 2200 x 2050mm)
	2,657 lbs. (1205kg) 3,031 lbs. (1375kg)	3,916 lbs. (1780kg) 4,695 lbs. (2130kg)	3,990 lbs. (1810kg) 4,762 lbs. (2160kg)	4,299 lbs. (1950kg) 4,960 lbs. (2250kg)	4,387 lbs. (1990kg) 5,038 lbs. (2290kg)	6,659 lbs. (3020kg) 7,760 lbs. (3520kg)	7,341 lbs. (3330kg) 8,157 lbs. (3700kg)	7,496 lbs. (3400kg) 8,818 lbs. (4000kg)	8,818 lbs. (4000kg) 9,920 lbs. (4500kg)
	3 Hp (2.3kw)	5 Hp (3.7kw)	5.2 Hp (3.9kw)	7.5 Hp (5.6kw)	8.25 Hp (6.1kw)	11 Hp (8.2kw)	11 Hp (8.2kw)	11 Hp (8.2kw)	11 Hp (8.2kw)
	75" x 56" x 76" (1890 x 1430 x 1930mm)	91" x 72" x 83" (2290 x 1830 x 2100mm)	98" x 82" x 83" (2480 x 2060 x 2100mm)	93" x 84" x 83" (2340 x 2130 x 2100mm)	98" x 84" x 83" (2480 x 2140 x 2100mm)	98" x 90" x 87" (2500 x 2290 x 2220mm)	118" x 90" x 88" (3000 x 2290 x 2220mm)	111" x 91" x 88" (2800 x 2290 x 2220mm)	128" x 90" x 87" (3250 x 2290 x 2220mm)

GRINDING

Clausing Precision ASDIII Automatic Surface Grinders



Model CSG1640ASDIII shown with optional paper/coolant system

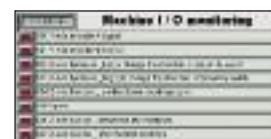


7.2" Touch Color Screen

Chuck Control (Optional)



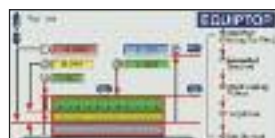
Starting Picture



Machine I / O Monitoring

ASDIII Series Operation Panel

Delta PLC Digital Control features a



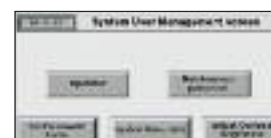
Grinding Size Input



Grinder Condition Input



Alarm Message



System Data

7.2" color touch screen and is equipped with the exclusive EQUIPTOP picture mode working system, easy to learn and operate.

Standard Features...

- On ASDIII models, you can set the vertical zero point, start point, finish grinding depth, target point and the grinding wheel rise-up point
- The machine features a simple and clear digital display & touch control panel for easy learning and operation
- Vertical feed powered by dual motors, AC motor for rapid up / down and stepping motor for micro downfeed positioning, slow auto downfeed and slow up / down
- Vertical positioning is displayed on the screen showing present spindle and setting the start point, rough grinding volume, finish grinding volume, downfeed volume for finish grinding, target point, rise up point, intermittent spark-out
- Cross transverse travel powered by DC servo motor, allows step feed and continuous infeed grinding
- The speed of the wheel dressing can be adjusted on the control panel
- Wide, deep base and honeycomb ribbed column on 10, 12, 16 & 20 series, designed for heavy-duty grinding
- High quality, ribbed, cast iron table, saddle and base
- All slideways and screws are fully oiled by an automatic continuous lubrication system to minimize wear on slideways & screws
- High Grade Anti-Wear Slideways... The saddle rides on precision, hand-scraped double V ways, and the table rides on precision hand-scraped V and flat ways coated with "TURCITE-B"
- Precision spindle cartridge, supported by preloaded precision angular contact ball bearings and one NN type roller bearing on 618 & 818 models
- Presettable hydraulic table speed control allows operator to pre-set speed rate so you can have the same speed rate every time the hydraulic table is engaged (10, 12, 16 series)
- Ballscrew for cross travel, powered by DC servo motor
- 230/3/60v or 460/3/60v standard other voltages may require transformer or special order

Specifications:

Model	CSG818ASDIII	CSG1020ASDIII	CSG1224ASDIII	CSG1228ASDIII	CSG1236ASDIII	CSG1632ASDIII	CSG1640ASDIII	CSG2040ASDIII
Table Size	8" x 18" (203 x 460mm)	10" x 20" (254 x 508mm)	12" x 24" (300 x 600mm)	12" x 28" (305 x 712mm)	12" x 36" (305 x 915mm)	16" x 32" (406 x 813mm)	16" x 40" (406 x 1020mm)	20" x 40" (506 x 1020mm)
Max. grinding length (longitudinal)	18.9" (480mm)	20.47" (520mm)	23.62" (600mm)	28" (712mm)	36" (915mm)	32" (813mm)	40" (1020mm)	40" (1020mm)
Max. grinding width (crosswise)	8.9" (228mm)	11" (280mm)	11.81" (300mm)	13" (330mm)	13" (330mm)	16" (410mm)	16" (410mm)	20" (500mm)
Max. distance from table surface to spindle centerline: standard optional	18" (460mm) -	19.68" (500mm) 23.62" (600mm)	23" (585mm) -	24.8" (630mm) 28.35" (720mm)	24.8" (630mm) 28.35" (720mm)	24.8" (630mm) 28.35" (720mm)	24.8" (630mm) 28.35" (720mm)	24.8" (630mm) 28.35" (720mm)
Standard magnetic chuck size	8" x 18" (200 x 450mm)	10" x 20" (250 x 500mm)	11.81" x 23.63" (300 x 600mm)	11.81" x 27.56" (300 x 700mm)	11.81" x 35.43" (300 x 900mm)	15.75" x 31.5" (400 x 800mm)	15.75" x 39.37" (400 x 1000mm)	19.68" x 39.37" (500 x 1000mm)
Longitudinal movement of table								
Max. travel (hydraulic)	18.9" (480mm)	22.83" (580mm)	25.59" (650mm)	30" (760mm)	37.8" (960mm)	35" (890mm)	41.73" (1060mm)	41.73" (1060mm)
Max. travel (manual)	20" (510mm)	24.41" (620mm)	28.74" (730mm)	32.68" (830mm)	39.37" (1000mm)	36.61" (930mm)	43.31" (1100mm)	43.31" (1100mm)
Table speed infinitely variable	.196"-.984"/min. (5-25m/min.)	.196"-.984"/min. (5-25m/min.)	.196"-.984"/min. (5-25m/min.)	.196"-.984"/min. (5-25m/min.)	.196"-.984"/min. (5-25m/min.)	.196"-.984"/min. (5-25m/min.)	.196"-.984"/min. (5-25m/min.)	.196"-.984"/min. (5-25m/min.)
Crossfeed transverse travel								
Auto transverse increment	.04" - .4" (1-10mm)	.04" - .5" (1-13mm)	.04" - .75" (1-19mm)	.04 - 1" (1-25mm)	.04 - 1" (1-25mm)	.04 - 1" (1-25mm)	.04 - 1" (1-25mm)	.04 - 1" (1-25mm)
Auto constant feeding speed	.79"-12.6" (20-320mm)/min.	.79"-12.6" (20-320mm)/min.	.79"-12.6" (20-320mm)/min.	.79"-12.6" (20-320mm)/min.	.79"-12.6" (20-320mm)/min.	.79"-12.6" (20-320mm)/min.	.79"-12.6" (20-320mm)/min.	.79"-12.6" (20-320mm)/min.
Max. auto transverse travel	9.25" (235mm)	10.63" (270mm)	12.2" (310mm)	13.78" (350mm)	13.78" (350mm)	17" (430mm)	17" (430mm)	20" (510mm)
Max. manual transverse travel	9.84" (250mm)	11.81" (300mm)	13.39" (340mm)	15" (380mm)	15" (380mm)	18" (460mm)	18" (460mm)	20.47" (520mm)
Handwheel per revolution	0.2" (5mm)	0.2" (5mm)	0.2" (5mm)	0.2" (5mm)	0.2" (5mm)	0.2" (5mm)	0.2" (5mm)	0.2" (5mm)
Handwheel per graduation	.0005" (.0127mm)	.0005" (.0127mm)	.0005" (.0127mm)	.0005" (.0127mm)	.0005" (.0127mm)	.0005" (.0127mm)	.0005" (.0127mm)	.0005" (.0127mm)
Wheelhead vertical downfeed								
Automatic infeed	.00005"-.0025" (0.001 - 0.05mm)	.00005"-.0025" (0.001 - 0.05mm)	.00005"-.0025" (0.001 - 0.05mm)	.00005"-.0025" (0.001 - 0.05mm)	.00005"-.0025" (0.001 - 0.05mm)	.00005"-.0025" (0.001 - 0.05mm)	.00005"-.0025" (0.001 - 0.05mm)	.00005"-.0025" (0.001 - 0.05mm)
Step feed (JOG)	.00004" (0.001mm)	.00004" (0.001mm)	.00004" (0.001mm)	.00004" (0.001mm)	.00004" (0.001mm)	.00004" (0.001mm)	.00004" (0.001mm)	.00004" (0.001mm)
Rapid travel approx.	6"(150mm)/min	6"(150mm)/min	6"(150mm)/min	6"(150mm)/min	6"(150mm)/min	6"(150mm)/min	6"(150mm)/min	6"(150mm)/min
Slow travel, approx.	.236"(6mm)/min	.236"(6mm)/min	.236"(6mm)/min	.236"(6mm)/min	.236"(6mm)/min	.236"(6mm)/min	.236"(6mm)/min	.236"(6mm)/min
*Minimum display value	.00005" (.0127mm)	.00005" (.0127mm)	.00005" (.0127mm)	.00005" (.0127mm)	.00005" (.0127mm)	.00005" (.0127mm)	.00005" (.0127mm)	.00005" (.0127mm)
Grinding spindle drive								
Speed (rpm)	3450	3450	1750	1750	1750	1750	1750	1750
Power rating	2 Hp (1.5kw)	3 Hp (2.2kw)	5 Hp (3.7kw)	7.5 Hp (5.5kw)	7.5 Hp (5.5kw)	7.5 Hp (5.5kw)	7.5 Hp (5.5kw)	7.5 Hp (5.5kw)
Standard grinding wheel								
Diameter	8" (203mm)	8" (203mm)	12" (305mm)	14" (355mm)	14" (355mm)	14" (355mm)	14" (355mm)	14" (355mm)
Width	.5"-.75" (12.7-19mm)	.75"-.1" (19-25mm)	1.25" (31.75mm)	2" (50mm)	2" (50mm)	2" (50mm)	2" (50mm)	2" (50mm)
Bore	1.25" (31.75mm)	1.25" (31.75mm)	3" (76.2mm)	5" (127mm)	5" (127mm)	5" (127mm)	5" (127mm)	5" (127mm)
Hydraulic motor (power rating)	1 Hp (.75kw)	2 Hp (1.5kw)	2 Hp (1.5kw)	3 Hp (2.2kw)	3 Hp (2.2kw)	3 Hp (2.2kw)	3 Hp (2.2kw)	3 Hp (2.2kw)
Crossfeed motor (power rating)	1/2 HP 400W	1 HP 750W	1 HP 750W	1 HP 750W	1 HP 750W	1 HP 750W	1 HP 750W	1 HP 750W
Elevating motor (power rating)	60W x 4P	1/4 Hp (.2kw)	1/4 Hp (.2kw)	1/4 Hp (.2kw)	1/4 Hp (.2kw)	1/4 Hp (.2kw)	1/4 Hp (.2kw)	1/4 Hp (.2kw)
Total space required (LxWxH)	71.3" x 44.6" x 65.4" (1810x1285x1680mm)	93.7"x57"x68.9" (2380x1450x1750mm)	106.3"x63"x73" (2700x1600x1850mm)	116"x78"x81" (2950x1970x2050mm)	140"x78"x81" (3550x1970x2050mm)	130"x87"x81" (3290x2200x2050mm)	158"x87"x81" (4020x2200x2050mm)	164"x86.6"x82.7" (4170x2200x2100mm)
Weight								
Net weight	2,657 lbs (1205kg)	3,990 lbs (1810kg)	4,387 lbs (1990kg)	6,659 lbs (3020kg)	7,341 lbs (3330kg)	7,496 lbs (3400kg)	8,818 lbs (4000kg)	10,582 lbs (4800kg)
Gross weight (lbs)	3,031 lbs (1375kg)	4,762 lbs (2160kg)	5,038 lbs (2290kg)	7,760 lbs (3520kg)	8,157 lbs (3700kg)	8,818 lbs (4000kg)	9,920 lbs (4500kg)	11,464 lbs (5200kg)
Rated power, approx.	3.8 Hp (2.9kw)	7 Hp (5.2kw)	8.25 Hp (6kw)	12 Hp (8.9kw)	12 Hp (8.9kw)	12 Hp (8.9kw)	12 Hp (8.9kw)	12 Hp (8.9kw)
Packing dimensions	74"x72"x72" (1880x1830x1960mm)	98"x82"x83" (2480x2080x2100mm)	98"x84"x83" (2480x2140x2100mm)	98"x90"x87" (2500x2290x2220mm)	119"x91"x88" (3000x2290x2220mm)	111"x91"x88" (2800x2290x2220mm)	128"x90"x87" (3250x2290x2220mm)	138"x90"x87" (3500x2290x2220mm)

*ASDIII models have no elevating handwheel but jog buttons per revolution or graduations.

Machine design, control and specifications are subject to change without notice.

GRINDING

Clausing Precision ASDIII Large Capacity Automatic Surface Grinder



Shown with optional MPG, Dynamic Balancer, Coolant System with Auto Paper Feeding Device and Magnetic Separator



ASDIII Series Operation Panel

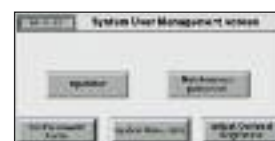
Delta PLC Digital Control features a 7.2" color touch screen and is equipped with the exclusive EQUIPTOP picture mode working system, easy to learn and operate.



Grinder Condition Input



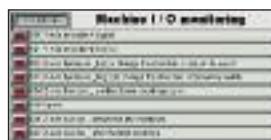
Alarm Message



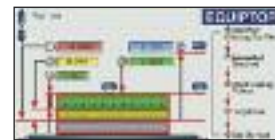
System Data



Starting Picture



Machine I / O Monitoring



Grinding Size Input

Standard Features...

- Large capacity up to 32" x 120" (810 x 3050mm) Table
- Enlarged extra strong ribbed column, ideal for heavy-duty grinding
- Table, saddle and base are constructed of high grade cast iron and ribbed for maximum strength
- Spindle is supported by 4 front and 2 rear precision angular contact ball bearings
- All slideways and ballscrews fully oiled by an automatic continuous lubrication system to minimize wear on slideways and ballscrews
- Longitudinal hydraulic transverse with constant speed function or manual speed handle
Table rides on double V slideways coated with "TURCITE-B" for maximum stability
- Cross traverse travel powered by DC servo motor and ballscrew, allows step feed and continuous infeed grinding.
- Vertical positioning by precision ballscrew
- Pre-set hydraulic table speed control allows operator to pre-set table speed rate and maintain the same speed rate every time the hydraulic table is engaged
- 230/3/60v or 460/3/60v standard other voltages may require transformer or special order

Specifications: (CSG24 Series are Column type construction / CSG32 Series are Cantilever type construction)

Model	CSG2448ASDIII	CSG2460ASDIII	CSG2480ASDIII	CSG3260ASDIII	CSG3280ASDIII	CSG32120ASDIII
Table Size	23.6" x 47.24" (600 x 1200mm)	23.6" x 59" (600 x 1500mm)	23.6" x 78.7" (600 x 2000mm)	31.9" x 60" (810 x 1525mm)	31.8" x 80.7" (810 x 2050mm)	31.8" x 120" (810 x 3050mm)
Max. grinding length (longitudinal)	49.6" (1260mm)	61.4" (1560mm)	81" (2060mm)	61" (1550mm)	80.7" (2050mm)	120" (3050mm)
Max. grinding width (crosswise)	24" (610mm)	24" (610mm)	24" (610mm)	31.9" (810mm)	31.9" (810mm)	31.9" (810mm)
Max. distance from table surface to spindle centerline	Standard 28.3" (720mm) Optional 33.5" (850mm)	28.3" (720mm)	28.5" (720mm)	28.3" (720mm)	28.3" (720mm)	28.3" (720mm)
Standard magnetic chuck size	23.6" x 47.2" (600 x 1200mm)	23.6" x 29.5" ea 2pcs (600 x 750mm) ea 2pcs	23.6" x 39.37" ea 2pcs (600 x 1000mm) ea 2pcs	31.5" x 29.5" ea 2pcs (800 x 750mm) ea 2pcs	31.5" x 39.4" ea 2pcs (800 x 1000mm) ea 2pcs	31.5" x 39.4" ea 3pcs (800 x 1000mm) ea 3pcs
Longitudinal movement of table						
Max. travel (hydraulic)	51.18" (1300mm)	63" (1600mm)	82.7" (2100mm)	63" (1600mm)	82.5" (2100mm)	122" (3100mm)
Max. travel (manual)	53" (1350mm)	64.9" (1650mm)	84.6" (2150mm)	64.9" (1650mm)	84" (2150mm)	124" (3150mm)
Table speed infinitely variable	196"-984"/min. (5-25m/min)	196"-984"/min. (5-25m/min)	196"-984"/min. (5-25m/min)	196"-984"/min. (5-25m/min)	196"-984"/min. (5-25m/min)	196"-984"/min. (5-25m/min)
Column crossfeed transverse travel						
Auto transverse increment (jog)	0.04"-1" (1-25mm)	0.04"-1" (1-25mm)	0.04"-1" (1-25mm)	0.04"-1" (1-25mm)	0.04"-1" (1-25mm)	0.04"-1" (1-25mm)
Auto constant feeding speed	1"-11"/min. (25-280 mm/min)	1"-11"/min. (25-280 mm/min)	1"-11"/min. (25-280 mm/min)	1"-11"/min. (25-280 mm/min)	1"-11"/min. (25-280 mm/min)	1"-11"/min. (25-280 mm/min)
Max. auto transverse travel	26" (660mm)	26" (660mm)	26" (660mm)	33.8" (860mm)	33.8" (860mm)	33.8" (860mm)
Max. manual transverse travel	27" (690mm)	27" (690mm)	27" (690mm)	34.8" (885mm)	34.8" (885mm)	34.8" (885mm)
Handwheel per revolution	0.004" (.1mm)	0.004" (.1mm)	0.004" (.1mm)	0.004" (.1mm)	0.004" (.1mm)	0.004" (.1mm)
Handwheel per graduation	.00004" (.001mm)	.00004" (.001mm)	.00004" (.001mm)	.00004" (.001mm)	.00004" (.001mm)	.00004" (.001mm)
Wheelhead vertical infeed						
Automatic infeed	0.05" (1mm) jogging downfeed 0.25/10000" (0.001mm)					
Step feed (jog)	jogging downfeed: 1-25/10000" (0.001-0.05mm)					
Manual pulse generator (per graduation)	0.00005" (0.001mm)	0.00005" (0.001mm)	0.00005" (0.001mm)	0.00005" (0.001mm)	0.00005" (0.001mm)	0.00005" (0.001mm)
Rapid travel, approx.	18"(460mm)/min.	18"(460mm)/min.	18"(460mm)/min.	18"(460mm)/min.	18"(460mm)/min.	18"(460mm)/min.
Slow travel, approx.	0.25"(6mm)/min.	0.25"(6mm)/min.	0.25"(6mm)/min.	0.25"(6mm)/min.	0.25"(6mm)/min.	0.25"(6mm)/min.
Handwheel per revolution	0.004" (0.1mm)	0.004" (0.1mm)	0.004" (0.1mm)	0.004" (0.1mm)	0.004" (0.1mm)	0.004" (0.1mm)
Handwheel per graduation	0.00004" (0.001mm)	0.00004" (0.001mm)	0.00004" (0.001mm)	0.00004" (0.001mm)	0.00004" (0.001mm)	0.00004" (0.001mm)
Grinding spindle drive						
Speed (rpm)	1750	1750	1750	1750	1750	1750
Power rating	10 Hp (7.5kw)	10 Hp (7.5kw)	10 Hp (7.5kw)	15 Hp (10kw)	15 Hp (10kw)	15 Hp (10kw)
Standard grinding wheel						
Diameter	16" (405mm)	16" (405mm)	16" (405mm)	16" (405mm)	16" (405mm)	16" (405mm)
Width	2" (50mm)	2" (50mm)	2" (50mm)	2" (50mm)	2" (50mm)	3" (50mm)
Bore	5" (127mm)	5" (127mm)	5" (127mm)	5" (127mm)	5" (127mm)	5" (127mm)
Hydraulic motor (power rating)						
Crossfeed motor (power rating)	2.6 Hp (2kw)	2.6 Hp (2kw)	2.6 Hp (2kw)	2.6 Hp (2kw)	2.6 Hp (2kw)	2.6 Hp (2kw)
Elevating motor (power rating)	2.6 Hp (2kw)	2.6 Hp (2kw)	2.6 Hp (2kw)	2.6 Hp (2kw)	2.6 Hp (2kw)	2.6 Hp (2kw)
Total space required (LxWxH)	170"x138"x 93" (4300x3500x2350mm)	193"x138"x 93" (4902x3500x2350mm)	233"x138"x 93" (5900x3500x2350mm)	244"x146"x 109" (6200x3700x2750mm)	284"x146"x 97" (7200x3700x2450mm)	367"x146"x 97" (9300x3700x2450mm)
Net weight (lbs)	14,330 (6500kg)	16,535 (7500kg)	18,740 (8500kg)	29,700 (13500kg)	33,000 (15000kg)	37,400 (17000kg)
Gross weight (lbs)	16,535 (7500kg)	18,740 (8500kg)	20,944 (9500kg)	33,000 (15500kg)	36,300 (16500kg)	41,800 (19000kg)

GRINDING

Clousing Grinder Accessories



Permanent Magnetic Chuck



Electro Magnetic Chuck



Inclinable Permanent Magnetic Chuck



Chuck Control with Demagnetizer



Coolant System



Coolant System with Magnetic Separator



Dust Collector



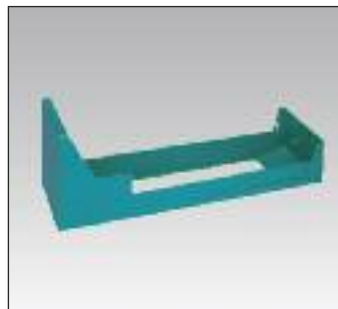
Coolant and Dust Unit



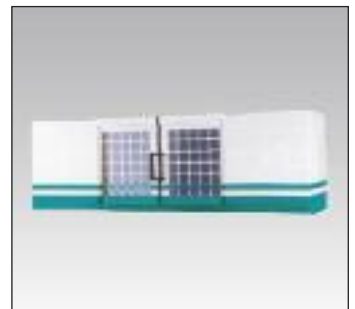
Coolant System with Manual Paper Feeding



Auto Paper Feeding Device with Magnetic Separator



Extra Splash Guard



Full Guarding Splash Guard (10/12/16 Series)



Manual Parallel Dressing Attachment



Electric Parallel Dressing Attachment



Adjustable Speed Rotary Magnetic Chuck

Clousing Grinder Standard Accessories

Diamond Dresser
Auto Lubrication System
Wheel Flange

Grinding Wheel
Balancing Arbor
Wheel Extracting Screw & Nut

Leveling Screws with Blocks
Touch-up Paint
Tool Box and Tools

Chuck control on all models except on 618 & 818 manual and 2A & 3A hydraulic models



Dynamic Balancer



Punch Former



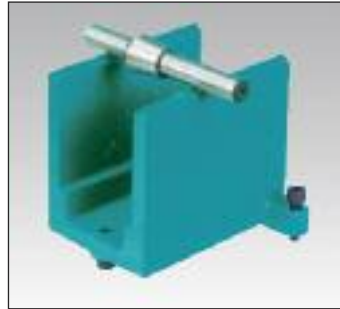
Digital Readout



Spare Wheel Flange



Halogen Work Light



*Balancing Stand
(Double Line)*



Roller Type Balancing Stand



*Micro Crossfeed for
616/818 Series*



*Micro Crossfeed for
10/12/16 Series*



*Micro Down Feed for
10/12/16 Series (STD on 2A
& 3A1020-2040 models)*



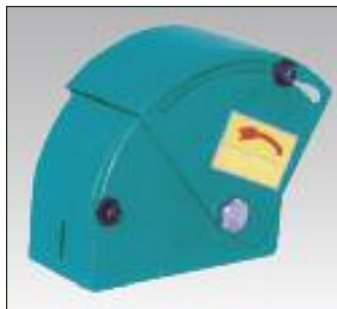
*Manual Pulse Generator for
ASDIII Series (stationary in
counsel STD)*



Precision Vice 3" or 4"



Frequency Changer



Swivel Wheel Guard



*Concave/Convex Forming
Dresser*